

THE TURPIN FARMSTEAD: AN AGRICULTURAL HISTORY AND CULTURAL RESOURCE REPORT

July 2011



707 Fairview Road
Stockbridge, Henry County, Georgia

ECA Project No. K-555-6
GA HP-090710-002



Submitted to
PM&A
30 Mansell Court
Suite A
Roswell, GA 30076

Prepared by
Michelle K. Taylor, MLA and
Jaime L. Destefano, MS
1375 Union Hill Industrial Court | Suite A
Alpharetta, GA 30004

The Turpin Farmstead: An Agricultural History and Cultural Resource Report

Prepared for PM&A
And T-Mobile South, LCC

By

Environmental Corporation of America
Michelle K. Taylor, MLA, Landscape Architect AND
Jaime L. Destefano, MS Architectural Historian

ECA Project No. K-555-6



July 2011



ENVIRONMENTAL CORPORATION OF AMERICA

ENVIRONMENTAL | GEOTECHNICAL | WETLANDS | ECOLOGY | CULTURAL RESOURCES

TABLE OF CONTENTS

Table of Contents iii
List of Figures iv
List of Photographs v

I. PROJECT DESCRIPTION AND METHODOLOGY 1
II. GEOGRAPHIC LOCATION 2
III. HISTORICAL OVERVIEW OF HENRY COUNTY 7
IV. THE TURPIN FARMSTEAD 13
V. CONCLUSION 24
VI. REFERENCES 25



LIST OF FIGURES

Figure 1.	Site Location Plan	3
Figure 2.	2010 Aerial Photograph.....	4
Figure 3.	Overall Sketch Map and Photograph Locations.....	5
Figure 4.	Central Sketch Map and Photograph Locations	6
Figure 5.	County Map.....	7
Figure 6.	1964 Aerial Photograph.....	12
Figure 7.	1989 Aerial Photograph.....	12
Figure 8.	2005 Aerial Photograph.....	12
Figure 9.	1866 District Plat Map of Henry County	13
Figure 10.	General Militia District Map	13
Figure 11.	Diagram Showing Subdivision of Land Lot 190.....	18
Figure 12.	1939 Aerial Photograph.....	18
Figure 13.	General Layout of Resource 1	19
Figure 14.	1939 Aerial Photograph Showing Location of Resource 7	22
Figure 15.	1939 Aerial Photograph Showing Property Features	Appendix A
Figure 16.	1939 Aerial Photograph.....	Appendix A
Figure 17.	1950 Aerial Photograph.....	Appendix A
Figure 18.	1964 Aerial Photograph.....	Appendix A
Figure 19.	1971 Aerial Photograph.....	Appendix A
Figure 20.	1986 Aerial Photograph.....	Appendix A
Figure 21.	1989 Aerial Photograph.....	Appendix A
Figure 22.	1993 Aerial Photograph.....	Appendix A
Figure 23.	2005 Aerial Photograph.....	Appendix A
Figure 24.	2006 Aerial Photograph.....	Appendix A
Figure 25.	2007 Aerial Photograph.....	Appendix A



LIST OF PHOTOGRAPHS

Photograph 1.	Northeasterly View of Resource 1	cover page
Photograph 2.	Westerly View of Resource 10.....	cover page
Photograph 3.	Northeasterly View of Resource 4	cover page
Photograph 4.	Northeasterly View of Resource 6	cover page
Photograph 5.	Front (South) Façade of Resource 1	19
Photograph 6.	Front (Southwest) Façade of Resource 2.....	20
Photograph 7.	Northwesterly View of Resource 3	20
Photograph 8.	Front (South) Façade of Resource 4.....	20
Photograph 9.	Northeasterly View of Resource 5	21
Photograph 10.	Interior View of Resource 6	21
Photograph 11.	Southeasterly View of Resource 8	22
Photograph 12.	Northeasterly View of Resource 9	23
Photograph 13.	Grave Marker of John South (b.1796 d.1891).....	23



I. PROJECT DESCRIPTION AND METHODOLOGY

During the months of February through April, 2011, Environmental Corporation of America conducted background research and a photographic documentation field survey of Georgia Historic Resource No. 205114, Turpin Farmstead, as part of mitigation efforts related to the construction of a telecommunications tower located at 707 Fairview Road, Stockbridge, Henry County, Georgia. This written report provides a developmental history of the farmstead, focusing particularly on the property in the context of agriculture and farming in Henry County. A Memorandum of Agreement (FCC NEPA-00205), governing the mitigation by and between the Federal Communications Commission, the Georgia State Historic Preservation Office, and T-Mobile South, LLC was finalized June 7, 2010.

Background research, field survey, and photographic documentation were conducted by Michelle K. Taylor, MLA and Jamie Destefano, MS of Environmental Corporation of America. The preparation of this report was conducted by Ms. Taylor, MLA of ECA and Architectural Historian, Jaime L. Destefano, MS. Historical information pertaining to the general developmental history of the farmstead within the context of agriculture in Henry County was obtained through research at the Georgia Historic Preservation Division, Henry County Public Library, the University of Georgia's Digital Library of Georgia, the Henry County Probate Court, Tax Assessor, property owner interview and a general internet data search.

Following the background research, a field survey was conducted on the property. Each structure, site, and landscape feature associated with the farmstead (Resource No. 205114) was assigned an individual number and photographed. Interior and exterior photographs were taken (when possible) of each structure and building. Contextual photographs of the landscape within the property

were also taken. Following the field survey, photographic documentation was prepared. The photographic documentation of the Turpin Farmstead was conducted in accordance with "Guidelines for Establishing a Photographic Permanent Archival Record." Archival CDs were prepared containing digital photographs in RAW Format as well as JPEG and TIFF. The photographic documentation supplements this report. Proof sheets and a photograph log are included in Attachment C.

The overall landscape and setting of the Turpin Farmstead reveal the various trends in agricultural practices occurring in Henry County from the mid-19th century to present, particularly those related to the cotton industry. The farmstead includes ten primary resources reflective of its early development as a cotton farm to its later adaption consistent with regional trends in agricultural diversification, including mid-20th century improvements in the dairy industry. The ten resources include eight buildings (the main house, a 1960s Ranch House, an L-Cottage, two large barns, a garage and open shed, and a 1950s milk house), a terraced agricultural field, and a historic cemetery. Two of the ten resources (#'s 9 and 10) are not located within the parent tract; however, they are historically associated with the farmstead, and contribute to its agricultural and developmental history.



II. GEOGRAPHIC LOCATION

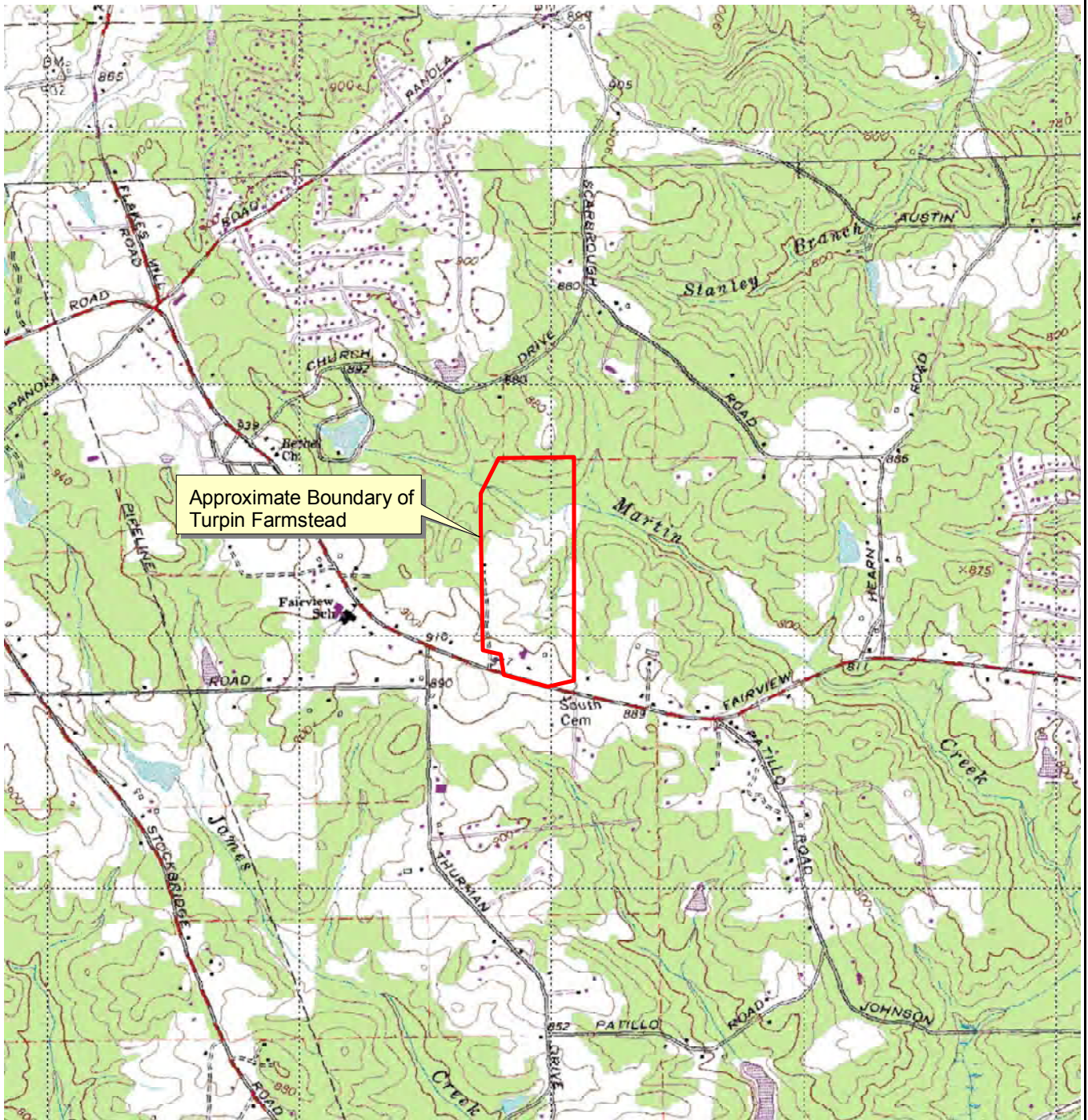
The Turpin Farmstead is located approximately 5 miles north of Stockbridge in Henry County. It is surrounded by residential and recreational development. Henry County is situated south of Atlanta in the north central portion of Georgia and is bounded by Dekalb County to the north, Newton and Rockdale Counties to the east, Butts and Spalding Counties to the south, and Clayton County to the west. Henry County currently encompasses 324 square miles, of which 323 square miles is land and 2 square miles is water.¹ Stockbridge, Georgia is located in the northwest portion of Henry County approximately 9 miles north of McDonough, the county seat. The city of Stockbridge was settled along Old Stagecoach Road in 1829.² Today, Stockbridge has a population of 23,000 and consists of residential, commercial, and industrial development.

The Turpin Farmstead is located along Fairview Road and is within the map limits of the 1964 (photorevised 1982) Stockbridge, GA USGS 7.5 Minute topographic map. Figures 1-3 show the approximate current boundary of the farmstead. The boundaries as shown are based on tax parcel maps, aerial photographs, and the owner interview. The Turpin Farmstead currently encompasses 78 acres and lies entirely within the 12th Land District, Land Lot 190. The tax parcel number is 045-01009000. Coordinates for the main house are N33.36'26.1", W-84.13'13.0".

¹ <http://henry county.georgia.gov>

² <http://stockbridge.georgia.gov>





Approximate Boundary of Turpin Farmstead



Source: USGS Topographic Quadrangle Map, 7.5 Minute Series, Stockbridge, GA (1964, photorevised 1982).

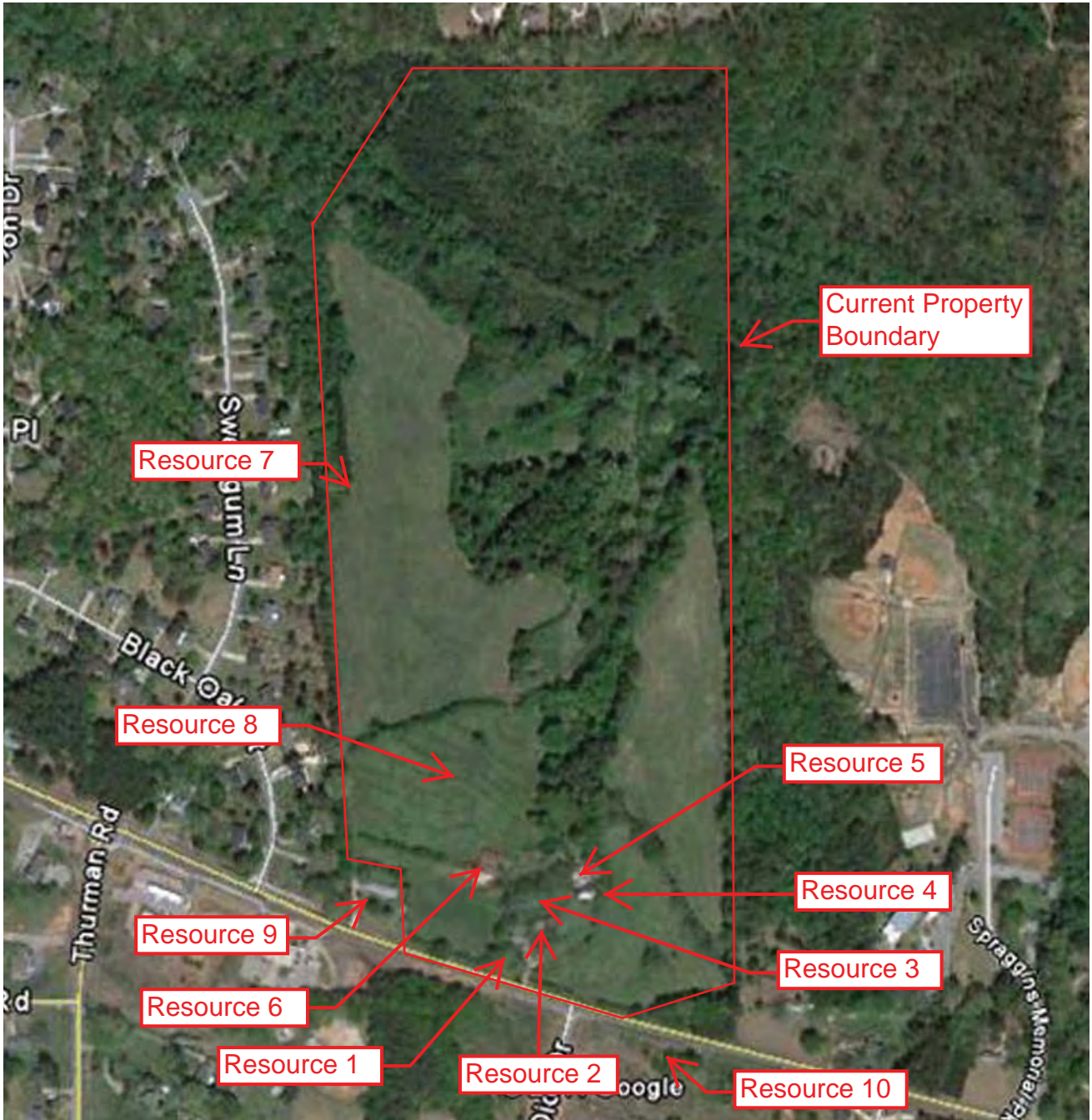


Turpin Farmstead
 707 Fairview Road
 Stockbridge, Henry County, Georgia



ECA Proj. K-555-6

Figure 1: Site Location Plan



Source: 2010 Google Aerial Photograph



Turpin Farmstead
 707 Fairview Road
 Stockbridge, Henry County, Georgia

Figure 2: 2010 Aerial Photograph

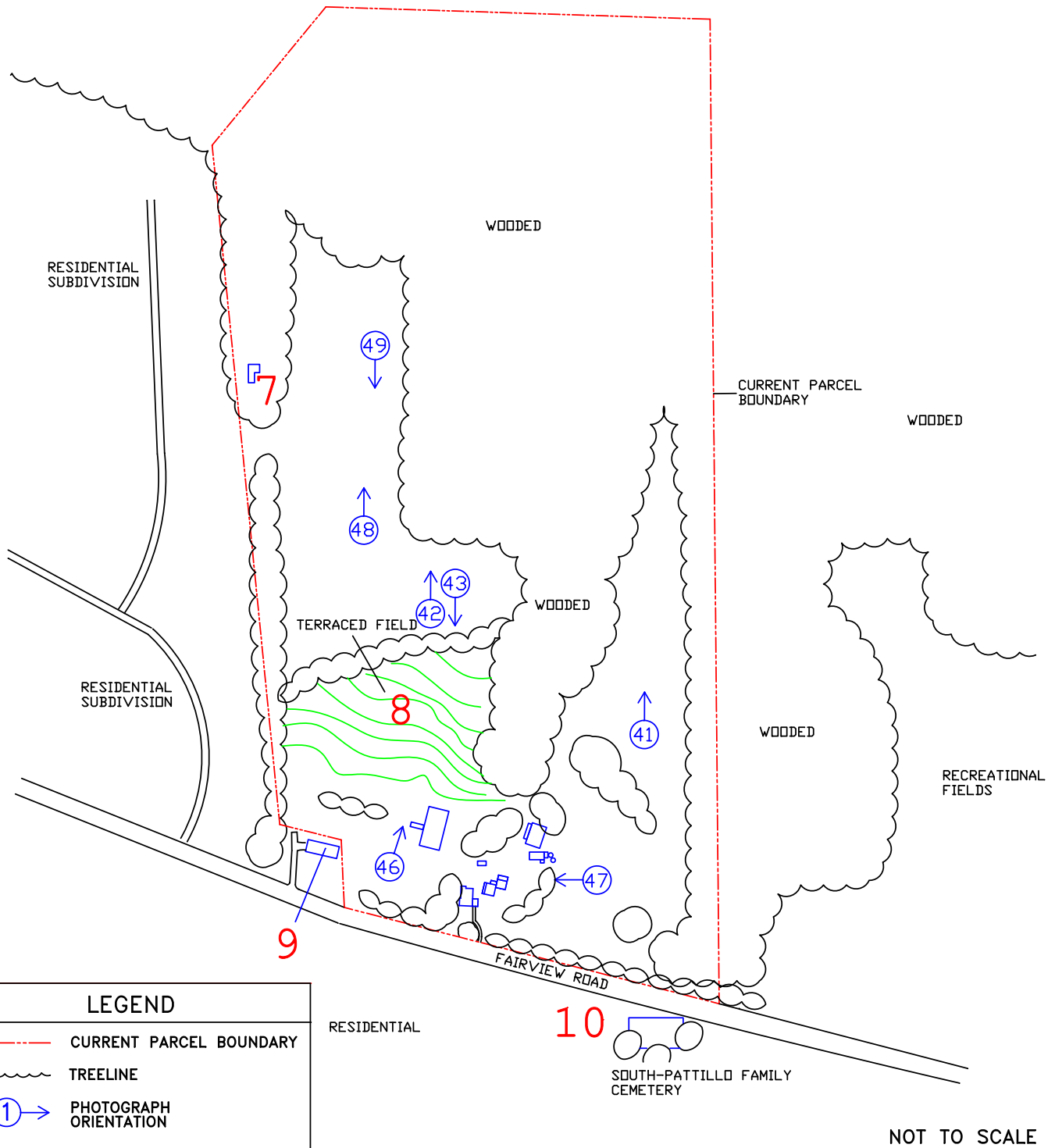
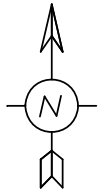


ECA Proj. #: K-555-6

RESOURCE KEY

- 7 L-Cottage
- 8 Terraced Agricultural Field
- 9 Ranch House
- 10 South-Pattillo Family Cemetery

RESIDENTIAL
SUBDIVISION



LEGEND

- - - CURRENT PARCEL BOUNDARY
- TREELINE
- ① → PHOTOGRAPH ORIENTATION

RESIDENTIAL

10

SOUTH-PATILLO FAMILY
CEMETERY

NOT TO SCALE

Turpin Farmstead
707 Fairview Road
Stockbridge, Henry County, Georgia
Figure 3: Overall Sketch Map and
Contextual Photograph Locations

SOURCE: ECA Site Visit, Survey & 2010 Google
Earth Image

DRAWN BY: MKT DATE: 7/8/2011
ECA File: L:/%/K555_overall.dwg



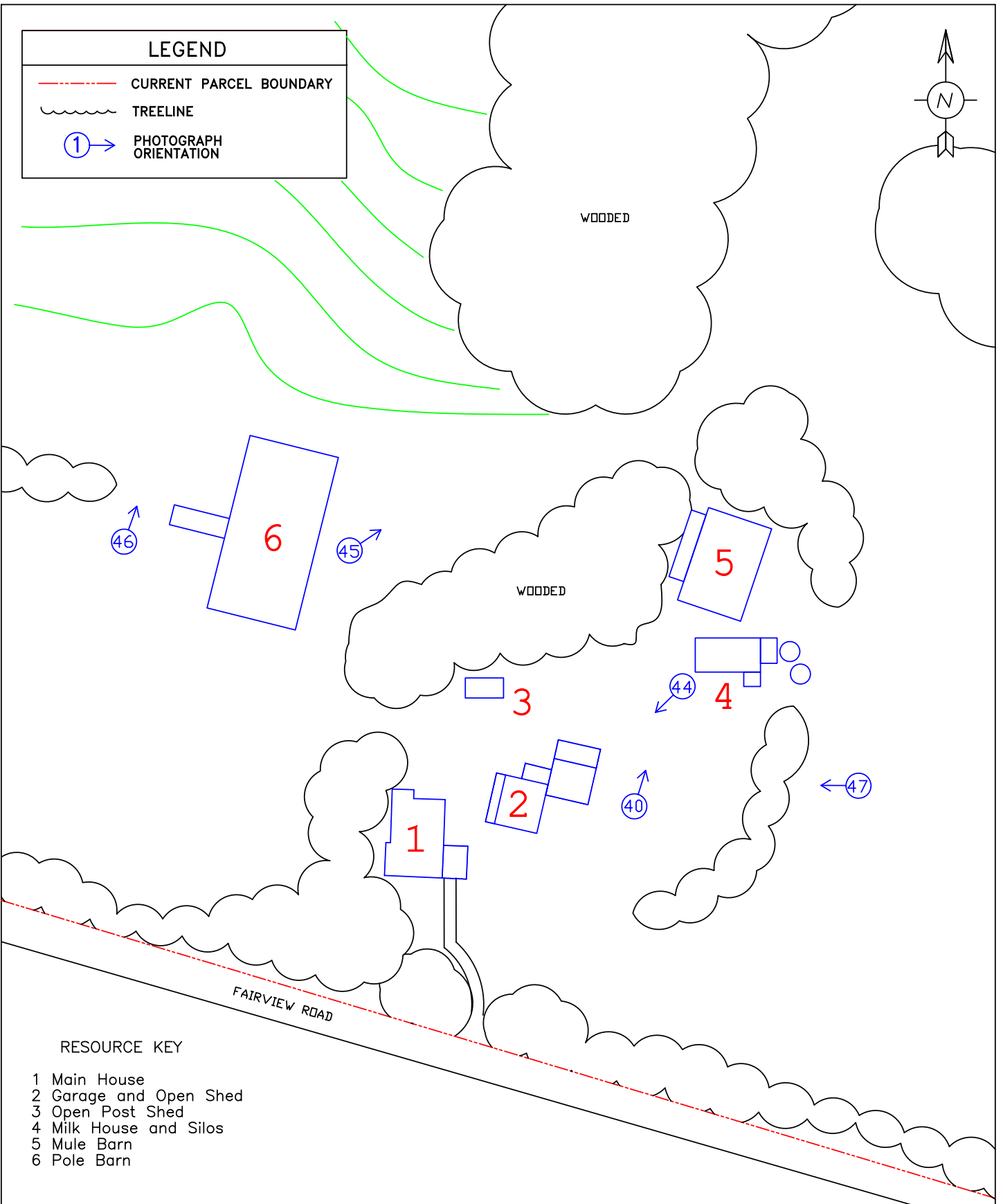
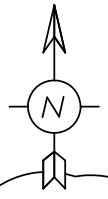
ECA Project #: K-555-6

LEGEND

--- CURRENT PARCEL BOUNDARY

~~~~~ TREELINE

① → PHOTOGRAPH ORIENTATION



**RESOURCE KEY**

- 1 Main House
- 2 Garage and Open Shed
- 3 Open Post Shed
- 4 Milk House and Silos
- 5 Mule Barn
- 6 Pole Barn

Turpin Farmstead  
 707 Fairview Road  
 Stockbridge, Henry County, Georgia

Figure 4: Central Sketch Map and  
 Contextual Photograph Locations

SOURCE: ECA Site Visit, Survey & 2010 Google  
 Earth Image

DRAWN BY: JXD      DATE: 7/8/2011  
 ECA Project #: K-555-6\_Sketch



ECA Project #: K-555-6

### III. HISTORICAL AND AGRICULTURAL OVERVIEW OF HENRY COUNTY

Henry County was established in 1821 by an act of the Georgia state legislature. The land consisted of territory ceded in the First Treaty of Indian Springs from the Creek Indian Confederation. The land was divided into large numbered squares called land districts, which were in turn divided into smaller numbered squares called land lots. The original county consisted of 70 square miles and 18 land districts encompassing parts of present day Newton, DeKalb, Fulton, Butts, Spalding, Clayton, and Rockdale Counties.<sup>3</sup>

Each original district was 9 square miles divided into 256 lots of 202.5 acres each. Over time the county was divided and now contains 8 of the original land districts, with only the 7<sup>th</sup> district remaining the full 9 square miles.<sup>4</sup>

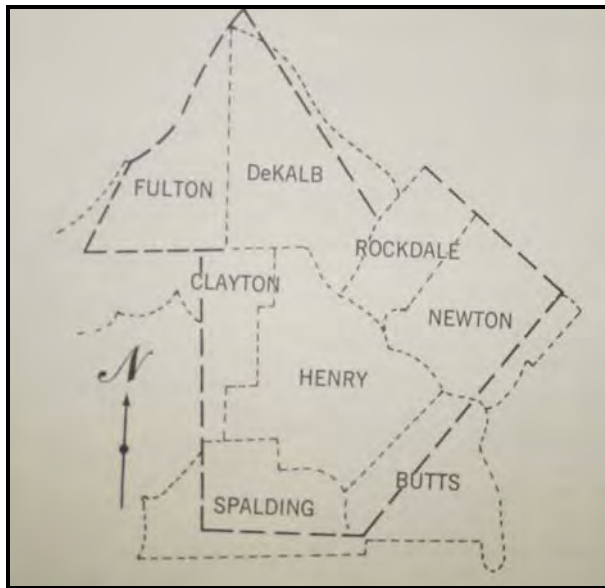


Figure 5: County Map showing present-day Henry County and surrounding counties. The heavy line shows the original size and shape of Henry County as established in 1821  
Source: Rainer, Vessey, Henry County History, 1971

<sup>3</sup> Blum-Barton, Linda. History of Henry County, Georgia. Online resource from rootsweb.com. Retrieved 2/23/2011

<sup>4</sup> Moore, Joseph Henry Hightower. First Families of Henry County, Georgia. McDonough: Genealogical Society of Henry County and Clayton Counties, Georgia, Inc; 1993. Pages xiii-xv, 1-2.

By 1823, the centrally located town of McDonough was selected as the Henry County seat and named in honor of Commodore Thomas McDonough, hero of the Battle of Lake Champlain in the War of 1812. In 1827 McDonough boasted a courthouse, academy, post office, churches, commercial stores and several taverns and inns.<sup>5</sup>

The Turpin Farmstead is situated approximately 5 miles north of Stockbridge. The city of Stockbridge is named for Professor Levi Stockbridge, a local school teacher. The original community of Stockbridge, currently known as Old Stockbridge, dates back to the 1850s and then consisted of a post office and several scattered log cabins.<sup>6</sup> Unlike most southern towns focusing on progress during Reconstruction and the late 19<sup>th</sup> century, Stockbridge was resistant to discussions of potential railroads crossing cotton fields and entering the town. Many property owners demanded substantial payment from the railroads if their fields would in any way be impacted by railroad development. Others, specifically two gentlemen from Atlanta, saw an opportunity and quickly purchased property south of Old Stockbridge and sold it to the railroad.<sup>7</sup> Here, approximately 1 mile south of Old Stockbridge, a depot was constructed and the present town of Stockbridge quickly grew around it. The town was officially incorporated in 1895.

The agricultural history of Henry County falls more or less into three periods of Georgia agricultural history as defined in Tilling the Earth: Georgia's Historic Agricultural Heritage, A Context.<sup>8</sup> These eras include the following: 1) 1785-1865: Rice, King Cotton, and the

<sup>5</sup> Blum-Barton, Linda. History of Henry County, Georgia. Online resource from rootsweb.com. Retrieved 2/23/2011

<sup>6</sup> Cook, Barbara (Transcribed and Edited). History of Henry County, Georgia 1821-1921. McDonough: Genealogical Society of Henry County and Clayton Counties, Georgia, Inc: 1921(2010 reprint). Page 39.

<sup>7</sup> *ibid.*

<sup>8</sup> Wessick, Denise P., J.W. Joseph, Datalie P. Adams, Tilling the Earth: Georgia's Historic Agricultural Heritage – A Context, New South Associates, Inc for the Georgia Department of Natural Resources, Historic Preservation Division. October 1, 2001.





Establishment of Staple Crops; 2) 1865-1920: the Postbellum Era, Cotton, and the Agrarian Revolution; and 3) 1920-1950: the Death of King Cotton and the Birth of Successful Agricultural Diversity. In some instances, it is evident that agricultural eras of Henry County deviate slightly from those outlined above in the dates of occurrence and/or trends. More specifically, Henry County's significant economic reliance on cotton resulted in later efforts for agricultural diversification than seen across the majority of the State. Therefore, the following sections provide an analysis of agricultural trends experienced in Henry County within the overall context of that of the State. In addition to the three agricultural eras defined in Tilling the Earth, a fourth period is included identifying modern trends affecting the future of agricultural practices in Henry County.

### **KING COTTON (1821-1865)**

Like the majority of early settlers across the state, Henry County relied primarily on subsistence farming, growing tobacco, corn and other grains on small parcels of land. The Piedmont region of Georgia, including Henry County, boasted a combination of soil and climate that was considered highly suitable for the growth of cotton. As a result, and like so many other counties across the State, cotton was quickly established as the staple crop across Henry County.<sup>9</sup> Due to the rapid success of the cotton industry, agriculture was the leading economic activity throughout the County.

The first significant period of agriculture begins in 1821 with the formal establishment of Henry County and ends with the devastation of the Civil War. The success of the cotton industry of Antebellum Henry County was substantial compared to those of other Georgia counties. Based on court records, David Clements owned the first cotton gin in Henry County in 1841.<sup>10</sup> Family farms, large-scale plantations and merchants all profited from cotton production during the period. By the 1850s, the plantation

<sup>9</sup> *ibid*

<sup>10</sup> Rainer, Vessie Thrasher. Henry County Georgia, The Mother of Counties. Baltimore: Gateway Press, Inc.: 1971. Page 333.

system of farming based on slave labor was well-established in Henry County. During this time, 56 individuals in the county owned 20 or more slaves and 232 farm owners had labor forces ranging from 5 to 19 slaves.<sup>11</sup> "Small subsistence farmers who could, grew cotton, and planters, whose estates enjoyed the economic bounty King Cotton provided his subjects, expanded their landholdings through the acquisition of the land of farmers."<sup>12</sup> As such, the agricultural landscape of Henry County evolved to include small farmsteads, larger family owned operations, and even larger plantations. Regardless of the scale of operations, many, if not all, participated in the production of cotton. King Cotton was the most profitable economic staple in Henry County during this period and brick warehouses overflowing with cotton bales could be found throughout the county.<sup>13</sup>

Cotton production continued during wartime with the harvest used for uniforms and blankets for the southern army. In addition to cotton, other crops harvested from residents' lands became an important food source for Confederate soldiers, making Henry County a prime target for General Sherman and the Union army.<sup>14</sup> By 1864 Sherman's Army had begun their march to the sea. On November 16, 1864, the Union had reached McDonough by way of Stockbridge. Thereafter, with agricultural fields destroyed and slavery eradicated, Henry County was slow to recover.<sup>15</sup>

### **POSTBELLUM ERA, COTTON, AND THE AGRARIAN REVOLUTION (1865-1920)**

The County faced tremendous economic struggles in the years immediately following the War. During Reconstruction, cotton planters throughout the State worked hard to recover and rebuild their cotton operations. The primary obstacle that planters faced in rebuilding their farms was the loss of slave labor. Newly freed, however, the former slaves had no land of their own and very

<sup>11</sup> Moore 1993; Page 6.

<sup>12</sup> Messick 2001; Page 26-27.

<sup>13</sup> Moore 1993; Page 6.

<sup>14</sup> <http://visithenrycountygeorgia.com>

<sup>15</sup> Cook 1921; Page 13.



little personal property. As a result, the large number of freedmen were in search of work. In many instances, the former slaves were competing for the same jobs as white farmers who lost their land and/or property during the War. The desire to rebuild the cotton industry resulted in the almost immediate replacement of the old system of planting based on slave labor with that of a crop-lien system of tenancy and sharecropping.

In a sharecropping system, a large land owner would subdivide a portion of their land into parcels that sharecroppers farmed for a share of the crop. “Tenant farmers, who usually owned some equipment or resources that placed them in a stronger bargaining position than sharecroppers, rented the land, maintaining control of the crop until ‘settling up’ with the landlords”.<sup>16</sup> Though both tenant farmers and sharecroppers experienced little debt relief, oftentimes propelling themselves into deeper debt due to the system’s reliance on a successful annual crop (i.e. cotton), the tenant farmer typically enjoyed a higher social status than that of the sharecropper. Despite the end of slavery, the southern States managed to adopt a new system of farming that allowed for the renewed production of cotton. With a predominantly black workforce back in the fields, and with cotton mills multiplying in the state, cotton again became the king of Georgia’s economy, particularly in Henry County.

While much of the old plantation regions of the state, including some areas of Henry County, became involved in the crop-lien system of agriculture, much of the County continued to consist of subsistence farms and small-mid sized, independent family-owned operations. Whichever type, scale, or system of farming was practiced, agriculture of the County had taken a drastic change as a result of the War. The old plantation system of agriculture was completely replaced with a crop-lien system of tenancy and sharecropping. Despite this Agrarian Revolution, Henry County managed to successfully revitalize

the cotton industry on which its economy so heavily relied.

While the farmers, planters, and merchants once again profited from cotton production in the early postbellum years, many people “called for agricultural diversification in order to keep Georgia self-sufficient and economically secure.”<sup>17</sup> These individuals, including the Bourbons and the later, New South Progressives, recognized the risks involved in reliance on a sole product for economic subsistence, and promoted progress, industrial development including railroads and factories, as well as agricultural diversification. Efforts were made across the County to increase railroad accessibility, to establish industrial factories, and construct warehouses for storing and refining cotton products.

Despite a growing number of factories and warehouses, the economy of Henry County remained dependent upon the cotton industry. The many efforts between 1870 to 1900 across the state promoting agricultural diversification went unheeded by the majority of Henry County farmers due to the greater profitability of cotton production.<sup>18</sup> The farmers disregarded the advice for agricultural diversity. Those that did heed the advice, adopted agricultural practices including the production of livestock, lumber, oats, wheat, fruits and vegetables, etc. yet cotton remained king.<sup>19</sup>

The cotton boom continued throughout the 1890s and early 1900s as more businesses made their way to Henry County. Cotton acreage in Henry County reached a historic peak in 1919 with a total of 66,238 acres of cotton in production.<sup>20</sup>

<sup>16</sup> Clyde, Samuel. Sharecropping and Tenant Farming. Online resource from bookrags.com Retrieved 6/10/2010.

<sup>17</sup> Messick, 2001; page 33

<sup>18</sup> Messick, 2001; pages 33-35

<sup>19</sup> *ibid*

<sup>20</sup> <http://henrycounty.org>



## DEATH OF KING COTTON AND THE BIRTH OF AGRICULTURAL DIVERSIFICATION (1920-1970)

Despite the continued success of the cotton industry in Henry County throughout the early years of the 20<sup>th</sup> century, it gradually became apparent to farmers that alternative agricultural practices were necessary in order to maintain their farms and livelihoods. The first and most significant turning point in the cotton industry of Henry County occurred in 1920 with the arrival of the boll weevil which destroyed the entire cotton harvest of that year. Due to its dependence on cotton production, the economy of Henry County quickly plummeted. Farmers who had yet to adopt the practice of agricultural diversification lost significant amounts of money with the loss of the an entire year of profits from the cotton harvest. These farmers were forced into tremendous debt as they tried to rebuild their farming operations. Some were forced to subdivide their farms.<sup>21</sup> The effects of the boll weevil were seen across the State. The reluctance of the majority of Henry County farmers to diversify likely contributed to the County experiencing a more significant and prolonged struggle than many other counties across the State throughout the 1920s.

Not yet recovered from the effects of the boll weevil, a second major blow to the agricultural recovery of Henry County was the Great Depression during the 1930s. The Depression prevented economic and agricultural recovery for yet another decade in Henry County. The continued reduction in size of farmsteads occurred and cotton production slowed. Yet, the cotton industry continued to remain the most profitable for Henry County throughout the 1930s and following decade. Due to the economic collapse caused by the boll weevil and the Great Depression, thousands of families relocated to nearby towns and cities. The population of Henry County, therefore, would continue to decline for the next two decades.<sup>22</sup>

<sup>21</sup> Reaves, 2004; Page 27

<sup>22</sup> <http://henrycounty.org>

In addition to the boll weevil and the Great Depression, soil erosion also contributed to the decline of cotton production from the 1920s onward. The combination of plantations, small farms, and eventually a crop-lien system degraded the land, eroding much of the state's fertile topsoil.<sup>23</sup> Henry County, a county so heavily reliant on cotton production and agriculture, experienced severe soil erosion. In the mid-1930s, a federal law established the Soil Conservation Service to curb extensive soil erosion. In 1937, soil conservation districts were established within the state of Georgia. These districts worked with the Soil Conservation Service to promote building of terraces and to provide soil conservation education.<sup>24</sup>

The process of terracing agricultural fields was first introduced in Georgia during the late 1860s and early 1870s when some farmers began to terrace their lands.<sup>25</sup> By the 1930s, with erosion so magnified, government efforts were underway to preserve Henry County farmsteads and the livelihoods of its citizens. By the 1950s, soil erosion was significantly decreased. However, by this time, cotton production in Henry County had greatly declined. Gins were dismantled across the county and agricultural patterns of Henry County began to rapidly change.

The devastation of the boll weevil, Great Depression, and soil erosion caused by cotton production finally forced Henry County farmers to reexamine the necessity of agricultural diversification. Although cotton remained the most profitable crop in Henry County through the 1960s, farm operations were finally diversifying and included the production of lumber, cattle, hay, pigs, dairy, vegetables, fruit, and chickens.

Major advancements in agricultural diversification occurred throughout the mid-20<sup>th</sup> century.

<sup>23</sup> Trimble, Stanley W. "Soil Erosion," The New GA Encyclopedia 2003.

<sup>24</sup> Trimble, 2003

<sup>25</sup> Hall, Arthur. "Terracing in the Southern Piedmont." Agricultural History, Vol.23, No.2; 1949, pages 96-109



Important advancements in milking technology and equipment played a significant role in continued agricultural diversification of farmsteads throughout Henry County. Pipeline milking was introduced during the 1950s. This provided for cow's milk to be transported through a glass or stainless steel pipe by vacuum into the milk house where it was released into a bulk milk tank. The milk would be kept cool in the bulk tank until trucks arrived to transport the milk to market. This method of milk collection and processing improved the sanitation of the milk and provided a superior cooling system which allowed producers to store larger quantities of milk for longer periods of time.<sup>26</sup> Prior to these advancements, milk was collected in buckets, stored in individual bottles, and transported daily in small quantities.

By the end of the 1960s forestry was reported as Henry County's top agricultural industry with fifty-six percent of land in the county devoted to woodland.<sup>27</sup>

#### **SUBURBANIZATION: POPULATION AND HOUSING BOOM (1970-PRESENT)**

In 1969, Interstate I-75 opened to traffic through Henry County and by 1970 the population of Henry County, which had been in decline for the previous two decades, was back to numbers reminiscent of times before the boll weevil.<sup>28</sup> Between 1970 and 1990, as a result of metropolitan Atlanta suburban sprawl, the population of Henry County almost tripled.<sup>29</sup> This population growth caused a housing boom that continues to threaten agricultural land in Henry County today. While the mortgage/housing collapse of 2007/2008 has slowed the housing growth in recent years, Henry County farmsteads continue to face developmental pressures. Historic aerial photographs demonstrate the extensive encroachment upon agricultural lands in the immediate vicinity of the Turpin Farmstead (see Figures 6-8).

---

<sup>26</sup> Brown, Melissa. "Dairy Industry," the New Georgia Encyclopedia, May 26, 2006.

<sup>27</sup> <http://henrycounty.org>

<sup>28</sup> *ibid*

<sup>29</sup> *ibid*





FIGURES 6-8  
AERIAL PHOTOGRAPHS DEMONSTRATING  
THE EXPANDING SUBDIVISIONS



**Figure 6: 1964 Aerial Photograph**



**Figure 7: 1989 Aerial Photograph**



**Figure 8: 2005 Aerial Photograph**

## IV. THE TURPIN FARMSTEAD

The Turpin Farmstead is located at 707 Fairview Road approximately 5 miles north of Stockbridge, Georgia. The 78-acre property is located within Land Lot 190 of the 12<sup>th</sup> Land District of Henry County. In addition, the property is located on the border of the Brushy Knob and Shakerag Militia Districts.<sup>30</sup>

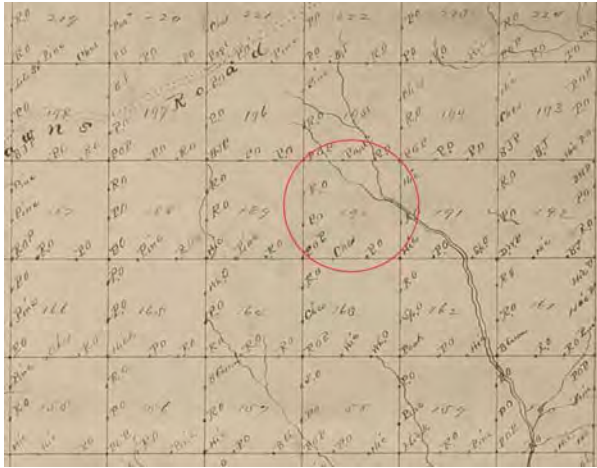


Figure 9: Henry County, District 12. 1866, District Plats of Survey, Survey Records, Survey or General, RG 3-324, Georgia Archives



Figure 10: General Militia Districts, U.S. Department of Commerce Map (approximate date 1950)

<sup>30</sup> Some historical documents refer to the Militia District rather than Land Lot and District

The farmstead is rectangularly shaped, occupying lands north of Fairview Road (former Atlanta-McDonough Road). The property features a gently rolling landscape. Fences run the full length of the North, East, and West boundary. Fences also partition the property into homestead, meadows, vegetated creek beds, and terraced field. Fence rows are evident on recent aerial photography and divide the homestead and yard from the fields. This is evident on recent aerial photography. The topography of the property slopes from Fairview Road north toward Martin Creek.

The homestead, including the main house (Resource #1), garage (Resource #2) and open shed (Resource #3), as well as associated outbuildings, including the milk house (Resource #4) and Mule Barn (Resource #5), are situated near a high point toward the southern portion of the property along Fairview Road common to historic farmsteads across the state. An abandoned dirt road traverses along the western edge of the property and leads to the L-Cottage (Resource #7) situated just within the western property line and near the meadow edge. Portions of the road still exist, however, much of the road is overgrown with vegetation. A path, lined with fence posts and wire, runs from the eastern entrance of the Pole Barn (Resource #6) around the yard to the rear of the Mule Barn (Resource #5). The portion of the property located north of Martin Creek is densely wooded. The driveway leading to the Main House is nearly straight, leading directly from Fairview Road to the attached carport. It is worth noting that historic aerial photographs show the driveway as semi-circular.

Agricultural outbuildings, with the exception of the Pole Barn, are located relatively close to the Main House, typical of farmsteads across Georgia. The Main House is shaded with large deciduous trees including one large pecan tree.

On a 2-acre tract of land located adjacent to the southwest corner of the property, and still owned by the Turpin family, is the Ranch House (Resource #9). Along the western edge of these 2





acres lies the former dirt road which leads to the L-Cottage (Resource #7).

The South-Pattillo Family Cemetery (Resource #10) is located south of the farmstead along Fairview Road and contains markers of members of both families dating back to the late 1700s. These families particularly the South's, played a significant role in the development of the farmstead.

The most notable agricultural landscape feature on the property is the one remaining terraced field located northwest of the homestead. The 1939 through 2010 historical aerial photographs show the field as terraced. Historically, the field was one of several irregularly arranged contour terraced fields. Consistent with characteristic terraced farms across the state, the majority of Turpin Farmstead was terraced along existing contour lines in 1939. It appears each terraced field was designed to retain topsoil, and to carry water slowly downhill to Martin Creek. It is unknown whether any terracing occurred during the late 19<sup>th</sup> century during the cotton years, or if it was a result of efforts in the 1930s to prevent soil erosion.

Today, the sole agricultural practice on the property is production of hay which is stored in the Pole Barn.

## DEVELOPMENTAL HISTORY

The earliest record referring to the land on which the homestead is situated is a deed dated July 19, 1827 (Deed Book A, Page 550). The deed makes reference to the original land grant of 202.5 acres to Nimrod Rages<sup>31</sup> and dated July 1, 1822. The acreage included all lands within Land Lot 190. According to the deed, the land was conveyed by Nimrod Rages to John S. Holt prior to the 1827 conveyance of the property to Isaac R. St. John (See Appendix C for a Chain-of-Title and associated deed records).

<sup>31</sup> The spelling of the last name may be incorrect.

Issac R. St. John, "a New York Gentleman, and his wife, Mary" retained the property until 1840 when it was conveyed to Joseph D. Beers (Deed Book J, Page 823). Six years later, Joseph Beers conveyed the property to John South on March 7, 1846 (Deed Book L, Page 29). The use of the property during this time is unknown; however, the original 202.5 acres of land remained intact despite multiple transfers of ownership between 1822 and 1846.

The South Family retained ownership of the property for almost fifty years. It was during the South Family ownership that the agricultural history of the property began to take shape. Prior to this date, no surviving records indicate that development of the property had occurred. Furthermore, a historic map study yields little information pertaining to development on or surrounding the 202.5-acre lot.

The South-Pattillo Family Cemetery (Resource #10) is located south of the Turpin Farmstead, across Fairview Road, and within Land Lot 163 at the northern boundary of said lot. Although having never been included in the 202.5-acre original tract of land, the cemetery suggests that John South and his family also owned land located within Lot 163, immediately south of Lot 190. Based on this information, it is likely that South acquired considerable acreage in the area and was likely operating a large-scale family farm during the mid to late-19<sup>th</sup> century.<sup>32</sup>

Census records indicate that John South (b. 1796), son of William South, was residing at his birthplace in Laurens, South Carolina in 1830 at the age of 34 (See *Appendix C* for census records). By 1840, like so many others in search of new opportunities, John South left the Carolinas, venturing into Georgia, and settled in Henry County. According to the 1840 census, John South was residing in Henry County and was head of a household of 7 individuals, including one slave. Six years later, John South acquired the 202.5-acre

<sup>32</sup> According to deed records, the Pattillo family acquired a portion of the eastern section of the 202.5-acre Land Lot 190 in 1905.



parcel in Land Lot 190 in which the Turpin Farmstead is situated.

The 1840 to 1860 census records indicate that John South, farmer, was head of a household of a total of 6 to 7 individuals. The value of his real estate in 1850 was approximately \$5,000 and \$5,925 in 1860. The number of slaves owned by John South (1 in 1840, and 5 in 1850) indicates that the farmstead was expanding and requiring additional laborers for crop production. The purchase of the 202.5 acres of land (Land Lot 190) in 1846 further attests to the rapid expansion of the South's farming operation. While an 1860 slave schedule indicates the presence of one slave house, it is unknown in which lot of land the slave house was situated. There is no surviving above-ground evidence on the existing Turpin Farmstead suggesting the former presence of a slave house. Based on the success of the cotton industry in the county during the mid-19<sup>th</sup> century, it is likely that John South had a well-established cotton farm at the outbreak of the Civil War.

The South family farmstead probably experienced similar hardships in the wake of the Civil War as other small farmsteads and large plantations within Henry County. The established system of farming based on free slave labor was eradicated. However, unlike the majority of farmers who were forced to subdivide their property, it appears that John South managed to hold the majority of his land including land within Lot 163 as well as the entire 202.5-acre parcel of Lot 190.

The 1870 census demonstrates a diminished household, consisting of John South, wife, and a black "domestic servant."<sup>33</sup> The record also lists John South as a farmer, most likely reestablishing cotton production on his farmstead until his death in 1891.

There is no indication that South is responsible for any of the buildings surviving within the current 73-acre property. He may have utilized the entirety

<sup>33</sup> By 1870, his children were of an age to begin households of their own. As such, it is no surprise that John South's household was diminished by this date.

of Land Lot 190 primarily for the production of cotton and/or various other crops. Also unknown is whether South introduced contour terracing during his cotton operations.

Following his death in 1891, his executors began the first large-scale subdivision of his lands. The continued use of the cemetery through the early 1900s suggests that the South family maintained ownership of at least a portion of Lot 163 through the early-20<sup>th</sup> century.<sup>34</sup> The 202.5-acres of Lot 190, however, experienced two large subdivisions during this time. According to Deed Book 1, Pages 31-32, between 1891 (death of John South) and March 31, 1893 (date of deed), 4.5 acres of land located at the southwest corner of Lot 190 was granted to James Henry and M.D. Ford. Another 67.5 acres of land from the east side of Lot 190 was conveyed to R.J. Carrall. By subdivision, the original 202.5-acre lot of land was reduced to 130 acres by 1893.

The above-referenced deed, (Book 1, Pages 31-32), dated March 31, 1893, conveys the 130-acre parcel of land in Lot 190 to Newton and J.N. Willingham. During the short period of time that the Willingham family owned the property (1893-1905), an additional small subdivision of the land occurred. A 2-acre parcel located at the southwest corner of the property was parceled off between 1896 and 1905 when the remaining 128 acres was conveyed to Morris Coleman White.<sup>35</sup>

Morris Coleman White (b. 1858) acquired the 128-acre portion of Land Lot 190 on December 18, 1905. Research suggests that the Main House (Resource 1) was constructed during the early years of ownership by M.C. White. In 1921, M.C. White deeded 73 acres of this land to C.C. White.<sup>36</sup>

<sup>34</sup> Deed research of Land Lot 163 was not conducted for purposes of this report. However, the presence of the South Family Cemetery and interview with the current property owner, Ronald Turpin, indicate that the land south Fairview Road (Land Lot 163) was formerly that of John South.

<sup>35</sup> Deed Book 2, Page 342 dated 1/24/1896 transfers the 130-acre parcel fully to J.N. Willingham. On 12/18/1905 (Deed Book 61, Page 384), J.N. Willingham sells 128 acres to M.C. White.

<sup>36</sup> Deed Book 18, Page 504.





The 73-acre parcel remained in the White family for almost 50 years.

Figure 11 is a diagram demonstrating the approximate subdivision of the original 202.5-acre parcel encompassing all of land Lot 190 into the 73-acre parcel on which the Turpin Farmstead is situated.<sup>37</sup> Figure 12 is a 1939 historic aerial photograph identifying the landscape features that are most likely remnants of the original boundaries of the 202.5-acre Land Lot 190. The aerial photograph also shows features of the farmstead depicting its development and use during the White family ownership.

In addition to the main house, the White family are likely responsible for the construction of the mule barn (Resource 5) and the L-Cottage (Resource 7) located within the existing 73-acre parcel. Based on an interview with Ronald Turpin, the L-Cottage was initially constructed as a sharecropper cottage. The 1939 aerial photograph is the earliest documentation showing these three resources. According to Mr. Turpin, rumors abound that the sharecropping families residing in the L-Cottage occupied their time during the fall and winter months with the production of “white liquor” on the property.

The terracing of the various fields, as visible in the 1939 aerial photograph, appears to be deliberately contoured to drain toward the creeks traversing the property. Based on the agricultural history of Henry County during this period, as well as the property owner interview, it is likely that cotton production was the predominant agricultural operation on the farmstead during the early- to mid-20<sup>th</sup> century.<sup>38</sup> Furthermore, deed records indicate that lands to the south (Land Lot 163), likely formerly owned by John South, were also acquired by C. C. White. The 1939 aerial photograph demonstrates significant contoured

terracing within land Lot 163 as well. Thus, it can be presumed that Morris White and C.C. White were likely successful cotton farmers, operating a family-run farmstead within both land lots during the early to mid-20<sup>th</sup> century.

In 1948, the executors of the estate of C.C. White relinquished the 73-acre parcel, deeding it to Clyde M. Turpin, whose wife was an extended descendant of the White Family. Shortly following the acquisition of the property, Clyde Turpin set out to establish a successful working farmstead. The idea of agricultural diversification was a popular trend during the mid-20<sup>th</sup> century in Henry County. As such, Turpin attempted to steer away from relying solely on cotton production. According to Ronald Turpin, Clyde Turpin continued the production of cotton, but also produced corn and produce until 1954. Advancements within the dairy industry during the 1950s provided Turpin with an excellent opportunity for agricultural diversity. In 1956, Turpin established his property as a working dairy farm, constructing the milk house and metal silos (Resource 4).<sup>39</sup> According to Ronald Turpin, the L-Cottage that once housed sharecropping families, was later used as a dwelling for a family assisting the Turpin’s with daily operations of the dairy farm.

Just as so many farmers throughout the county slowed the production of cotton during the mid to late-20<sup>th</sup> century, the evolving landscape of the Turpin Farmstead as depicted in the historic aerial photographs reveals similar trends. While the 1939 aerial photograph reflects substantial terraced fields likely due to extensive cotton production and the resulting soil erosion, subsequent aerial photographs demonstrate the gradual diminishment of the contoured terraces. The majority of the fields within the farmstead were utilized for livestock grazing during the period of dairy farming. A single contoured, terraced field survives on the farmstead (Resource 8) as an indicator of several decades of cotton production

<sup>37</sup> The existing Turpin Farmstead is 78 acres. At some point during the Turpin ownership, an additional 5 acres of land was acquired.

<sup>38</sup> Based on the interview with Ronald Turpin, he has no knowledge of agricultural practices on the farmstead prior to 1948; however, he feels strongly that the production of cotton occurred throughout the early-20<sup>th</sup> century, if not earlier.

<sup>39</sup> The date of construction is based on an interview with current property owner, Ronald Turpin.



resulting in soil erosion. In addition, the L-Cottage serves as a reminder of the Agrarian Revolution and the transition from plantation farming to a crop-lien system of agriculture during the postbellum era and early-20<sup>th</sup> century. The property is reflective of the common evolution of farmsteads in Henry County from the original 202.5-acre land lot to smaller, family-owned farmstead operations. It is indicative of the growth and decline of the cotton industry and the establishment of agricultural diversification.

In 2002, the property was deeded to Ronald M. Turpin, who continues to maintain the property. According to Mr. Turpin, dairy operations ceased June 1980. The production of hay continues.



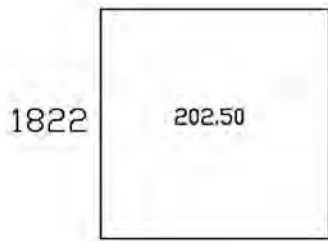


Figure 11: Diagram showing the approximate subdivision of the original 202.5 acres of Land Lot 190 from 1822 to 1948 when the Turpin Family acquired the property

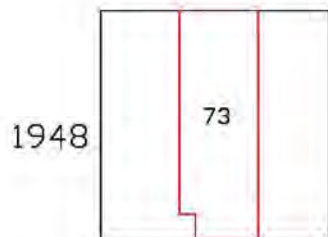
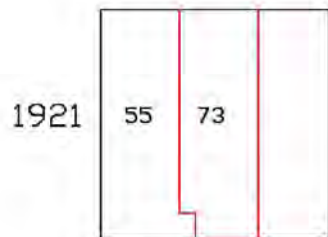
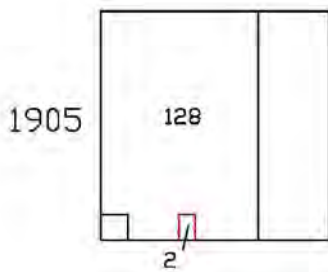
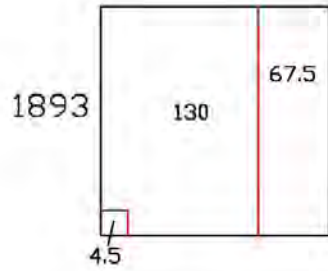


Figure 12: 1939 Aerial Photograph showing landscape features of the farmstead and surrounding area. The aerial photograph depicts remnants of the former boundaries of the 202.5-acres of Land Lot 190, the contoured terracing of agricultural fields, and the three structures erected during the White family ownership

## BUILDINGS AND RESOURCES

The Turpin Farmstead consists of a total of 8 standing structures: the main house (Resource 1), a garage with open shed (Resource 2), an open post shed (Resource 3), a milk house with associated silos (Resource 4), a mule barn (Resource 5), a pole barn (Resource 6), an L-cottage (Resource 7), and a Ranch House (Resource 9). A small surviving portion of the historic terraced fields serves as Resource 8. Lastly, the South-Pattillo Family Cemetery located south of Fairview Road is Resource 10. Although Resources 9 and 10 are not located within the existing parent tract, they are both associated with the historic farmstead and each provide valuable information pertaining to its developmental history and people who contributed to the agricultural history of Henry County. The following section provides a brief description of each of the 10 resources associated with the Turpin Farmstead, its evolution, and its agricultural history. Additional photographs of each resource are provided in Appendix D. A photograph log and sketch map identifying photograph orientations are also included in Appendix D.

### Resource 1: The Main House, c. 1900



Photograph 5: Front (South) Façade of Resource 1

The main house of the Turpin Farmstead reflects the late-19<sup>th</sup> to early-20<sup>th</sup> century development of the property. The one and a half-story, side-gabled cottage is similar in form to a central hallway cottage of the late-19<sup>th</sup> century with one room deep; however, the hallway is slightly off-centered

with unequal rooms on either side. The original, rectangular structure features an exterior field stone chimney at each gable end. The top portions of the chimneys are red brick with a corbelled brick tapering of the flue. An apparent early-to-mid-20<sup>th</sup> century one-story, hipped ell addition extends northwesterly from the rear of the principal massing. A large, mid- to late-20<sup>th</sup> century recessed shed addition is located in the rear ell. A modern recessed, side-gabled carport extends from the right end of the principal massing. The entire house, including additions, rests on a brick foundation. A brick apron with sill surrounds the house and all additions. All roofing is asphalt shingles. The house is clad with vinyl siding with the front façade (south) featuring vertical vinyl.

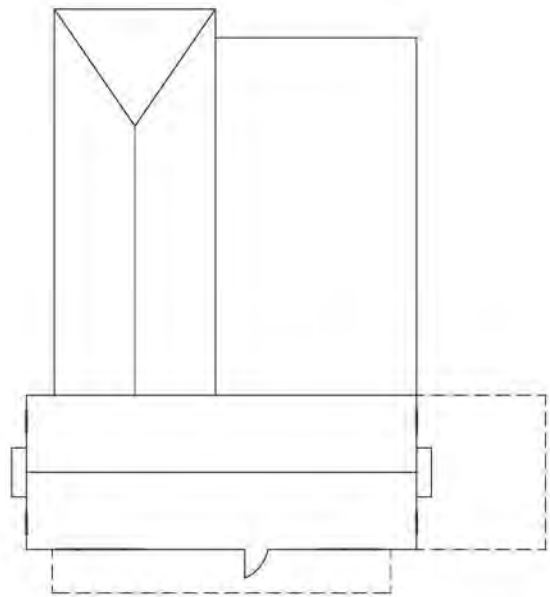


Figure 13: General layout of Resource 1 (not to scale)

The front façade is three bays featuring a tripartite picture window on the left, an entry door, and paired windows on the right. The front porch is centrally located with a shed roof supported by four square columns. The entry door is a modern replacement, paneled door. Primary windows of the principal, side-gabled portion of the structure are 6 over 6, double-hung, metal sash. A single window is situated on either side of each chimney





on both the first floor and ½-story. Thus, a total of four windows are located at each end of the principal massing.

The rear ell is one bay wide, three bays deep and features the same primary window fenestration as the principal massing. The modern rear shed addition features one over one metal sash windows. This addition is two bays wide and four bays deep with an entry door situated on the east façade.

### Resource 2: Garage and Open Shed, c. 1970



Photograph 6: Front (Southwest) Façade of Resource 2

The front-gabled, two-unit garage faces southeast and is constructed of concrete block. The garage, erected c. 1970, features clapboard in the gables and several open shed additions supported by wood posts surrounding the garage. The roof of the garage is covered with asphalt shingles. The open shed roofing is corrugated metal. Agricultural equipment is stored under the shed roofing.

### Resource 3: Open Shed, c. 1975



Photograph 7: Northwestern View of Resource 3

The open equipment shed features a metal gabled roof supported by wooden posts. The rear (north) elevation is clad with standing seam metal. Agricultural equipment is stored beneath the shed.

### Resource 4: Milk House and Silos, 1956



Photograph 8: Front (South) Façade of Resource 4

The milk house and metal grain silos were erected in 1956 by Clyde M. Turpin shortly after he acquired the property from C.C. White in 1948. The construction of the milk house during this period not only coincides with efforts of agricultural diversification in the region but also with the improvements in milking equipment and the cooling and transportation of milk during the 1950s.

The Turpin Milk House is a one-story, ell-shaped, concrete block structure with a corrugated metal



gabled roof. The front façade faces south and consists of five bays: a door, a primary entry door, window, window, and a single, front gabled bay extension. The windows are original six over six, double hung sash within a wooden frame. The left entry features a simple wooden door of vertical flush board. The primary entry door is original with six rectangular lights (missing panes) and horizontal panel below. Below this panel are remnants of a larger square panel. The exterior, concrete block walls are painted white; however, there is evidence of earlier teal color paint.

Upon entering the milk house, a paneled door leads to a small workroom on the right. The primary room consists of original milking and transfer pipeline equipment, despite substantial rusting. Some of the walls reveal white paint. The surviving equipment suggests that cows were milked within the building as opposed to outdoor stalls. The cows were apparently attached directly to the milking vacuum and pipelines. An interior rear door leads to an exterior holding area for the cows. This area features a shed roof supported by wooden posts. According to the property owner, Ronald Turpin, the milk house contained large, stainless steel bulk tanks when in operation. Two large metal silos are located directly east of the milk house and utilized as grain silos.

#### Resource 5: Mule Barn, c. 1930



Photograph 9: Northeastly View of Resource 5

The one-and-a-half-story frame mule barn features a front (south) facing gable and a central runway

extending then length of the building. A hay loft/workshop is situated in the space beneath the gable. An inspection of the interior of the structure as well as construction materials suggests that the original historic massing was a long, single crib barn resting on a foundation of stacked field stone. According to the property owner, the mule barn was constructed during the 1930s.

Today, the original single crib barn demonstrates an incremental growth with the construction of multiple extensions, additions, and open sheds. An apparent alteration is the extension of the gable to the east. Under the extended roof, to the east of the central runway, is a stairwell leading to the hay loft as well as two full-length cribs and multiple smaller cribs utilized for storage and hay. An open shed addition is located on either side of the principal massing, and another located in the front (south).

#### Resource 6: Pole Barn, c. 1960



Photograph 10: Interior View of Resource 6

The c. 1960 pole barn features a front (west) facing gable with a corrugated metal roof supported by a framework of upright poles set directly into the ground – an efficient and economical construction method of barns during this period. The structure is a single bay with a large, full length entry opening at either end. The exterior walls are partially clad with corrugated metal. The interior space is a single, large unit and utilized for the storage of hay bales. Unique to this structure is a shed extension along the full length





of the north façade. Similar to a bank barn, this section of the barn is situated along the side of a small hill permitting direct access at a lower level than that of the principal massing. An open shed with metal roof supported by round wood posts extends westward from the pole barn.

#### Resource 7: L-Cottage, c. 1900

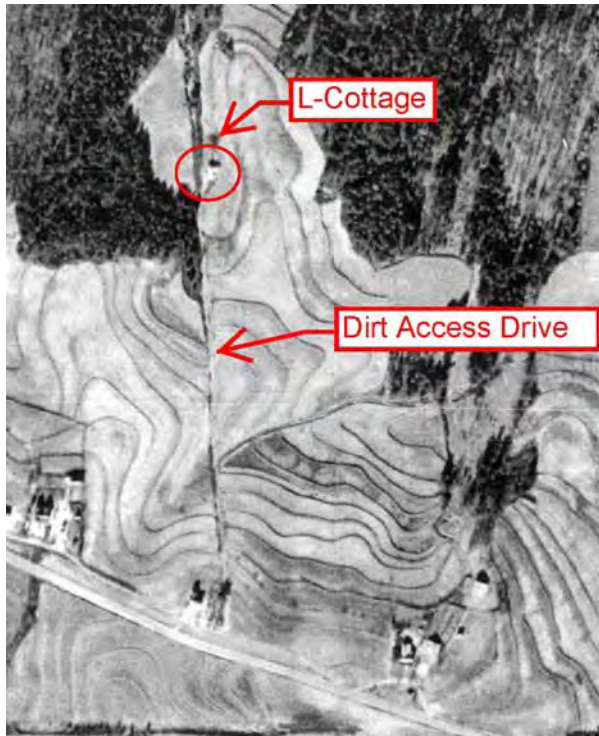


Figure 14: 1939 Aerial Photograph Showing Resource 7 and Associated Access Drive

The one-story frame, L-Cottage is located near the rear of the farmstead along the western property line. The dwelling is a former sharecropper cottage likely constructed during the early-20<sup>th</sup> century. Various sharecropping families resided in the house throughout the early-to-mid-20<sup>th</sup> century. When the property became a dairy farm in 1956, the family residing in the L-Cottage assisted with the maintenance of the farm, livestock, and dairy production. The dwelling later housed the sister-in-law of Ronald Turpin until 1992.

The structure has been vacant for several years and access not permissible. In addition, the house is surrounded by heavy vegetation and barbed wire

obstructing much of the view of the structure. Despite minimal visibility, the basic form of the structure is discernable. In addition, historic aerial photographs aid in the documentation of the building.

The house appears to be a gabled, L-Cottage with an asphalt shingled roof, weatherboard siding, and rests on an apparent brick pier with infill concrete block foundation. It appears that the front façade faces west. Historic aerial photographs indicate that a dirt road running along the west property line led directly to the house. A portion of this road survives today.

A rear shed addition is located within the ell at the southeast corner of the house. An electric utility line runs to the cottage indicating that its occupants at one time enjoyed the convenience of electricity.

#### Resource 8: Terraced Agricultural Fields



Photograph 11: Southeasterly View of Terraced Fields (Resource 8)

As previously discussed, historic aerial photographs indicate that the Turpin farmstead had a well-established terraced landscape as late as 1939. By this date, the majority of the property consisted of terraced agricultural fields. Over the next seventy years, the terraced fields began disappearing as the dairy industry became the predominant agricultural practice of the farm during the 1950s. All that remains of the former, contoured terraced fields is a small portion located





behind the pole barn (Resource 6) near the center of the property. The grass and terraces are well-maintained, stepping down toward a small creek to the north.

### Resource 9: Ranch House, 1965



Photograph 12: Northeastly View of Resource 9

Constructed in 1965, the one-story, rectangular-shaped Ranch House is frame construction with a brick veneer and rests on a brick foundation. The low-pitched, side-gabled roof features asphalt shingles. The front (south) façade is nine bays consisting of a carport with two windows, followed by four windows, a door, and three additional windows. Primary windows are six over nine, double-hung sash with white shutters. An interior brick chimney is situated along the ridge. An entry porch features a gabled roof supported by round, wood columns. This structure is an excellent example of a Georgia Ranch House.

The 2-acre parent tract on which the Ranch House is situated was deeded to the current property owner, Mr. Ronald and Carolyn Turpin on December 22, 1992 as a “family gift” (Deed Book 4771, Page 60). The parcel was once part of the original 202.5-acre parcel of land. As previously discussed, it was subdivided from the principal property during the ownership of J.N. Willingham and deeded to a family member. When the 73-acre farmstead was acquired by the White Family, and later inherited by the Turpin Family, the small 2-acre parcel was also transferred to the respective families. As such, the 2-acre parcel continues to be

associated with the farmstead as a whole, as well as to the families that contributed to its development and preservation. Furthermore, the Ranch House, constructed in 1965, demonstrates the continued evolution of the farmstead as the 2-acre parcel developed into a small, family homestead. The current residents of the Ranch House are family friends of the Turpin’s who once resided in the L-Cottage (Resource 7) and assisted with the dairy farm.

### Resource 10: South-Pattillo Family Cemetery



Photograph 13: Grave marker of John South (b. 1796-d. 1891)

The South-Pattillo Family Cemetery is located south of the current Turpin Farmstead, across Fairview Road (Atlanta-McDonough Road), near the northern boundary of Land Lot 163. Although never having been included in the 202.5-acre original tract of land, the cemetery suggests that John South and his family also owned land located



within Lot 163, immediately south of Lot 190.<sup>40</sup> Based on this information, it is likely that John South was operating a large-scale family farm during the mid to late-19<sup>th</sup> century.

The cemetery is accessed from the south side of Fairview Road. Concrete curbing surrounds the south and west sides of the cemetery. The cemetery consists of 8 marked graves and approximately 17 unidentified graves. Individuals interred in the cemetery include those of the South and Pattillo families. The earliest marker is that of John South (b. 1796 – d.1891). John South acquired the original farmstead of approximately 202 acres in 1846 (Deed Book L, Page 29) and retained ownership until his death in 1891. Other family members interred in the cemetery include Lilla Pattillo (b. 1866 – d.1894), Magnolia Pattillo (b. 1887 – d.1901), Newton South (b. 1836 – d.1902), J. H. W. M South (b. 1833 – d. 1902), Infant Daughter, Pattillo (b. 1905 – d. 1905), Nancy South (b. 1845 – d. 1907) and Joel B. South (b. 1878-d. 1907).

Markers in the cemetery include two, modest concrete box tombs. The marker of John South is a simple limestone headstone of which the top half has broken off and currently leans against its base. A relatively short, approximately 4 feet in height, obelisk marks the grave of J. H. W. M. South. The grave of the Pattillo Infant Daughter features decorative curbing and a detailed headstone with the image of hand reaching from the sky grasping a dove. The “hand coming down” often represents the presence of the almighty and the dove is a symbol of purity and peace.<sup>41</sup> A decorative iron fence surrounds a small plot containing approximately four graves.

## VI. CONCLUSION

The Turpin Farmstead survives as a representative example of the evolution of agricultural trends of Henry County from the mid-19<sup>th</sup> century to the late-20<sup>th</sup> century. The property not only reflects the county’s reliance on cotton production for over 100 years, it also demonstrates the patterns of land subdivision common among farmsteads over time, the Agrarian Revolution, and agricultural diversification. Surviving resources and the landscape of the property reflect the evolution of a family farmstead in Henry County throughout the 20<sup>th</sup> century. In particular, the farmstead demonstrates the necessity to adopt new agricultural trends while taking advantage of advancements in farming technologies. With threats of encroaching neighborhoods, the Turpin Farmstead remains one of a few surviving reminders of the important agricultural history of Henry County and the struggles faced by those who relied so heavily upon the land .

<sup>40</sup> Ronald Turpin also indicated his understanding that the South Family once owned the lot south of Fairview Road.

<sup>41</sup> Keister, Douglas. *Stories in Stone: A Field Guide to Cemetery Symbolism and Iconography*. New York: MJF Books, 2004.



## REFERENCES

- Blum-Barton, Linda. "History of Henry County, Georgia." Online resource from rootsweb.com. Retrieved 2/23/2011
- Brown, Melissa. "Dairy Industry," The New Georgia Encyclopedia, May 26, 2006.
- Cook, Barbara (Transcribed and Edited). History of Henry County, Georgia 1821-1921, McDonough: Genealogical Society of Henry County and Clayton Counties, Georgia, Inc: 1921(reprint 2010).
- Clyde, Samuel. "Sharecropping and Tenant Farming." Online resource from bookrags.com. Retrieved 6/10/2010.
- Hall, Arthur. "Terracing in the Southern Piedmont." Agricultural History, Vol.23, No.2; 1949.
- Henry County Historical Society. General Reference Material.
- Henry County Probate Office. Deeds, Wills, and Marriage Records.
- Keister, Douglas. Stories in Stone: A Field Guide to Cemetery Symbolism and Iconography, New York: MJF Books, 2004.
- Messick, Denise P., J.W. Joseph, and Natalie P. Adams. "Tilling the Earth: Georgia's Agricultural Heritage A Context." New South Associates, Inc. for Georgia Department of Natural Resources, Historic Preservation Division, 2001.
- Moore, Joseph Henry Hightower. First Families of Henry County, Georgia, McDonough: Genealogical Society of Henry County and Clayton Counties, Georgia, Inc; 1993.
- Rainer, Vessie Thrasher. Henry County Georgia, The Mother of Counties. Baltimore: Gateway Press, Inc.: 1971.
- Reaves, Michael. Historic Henry County, San Antonio: Historical Publishing Network; 2004.
- Trimble, Stanley W. "Soil Erosion," The New Georgia Encyclopedia 2003.
- Turpin, Ronald M. Owner Interview. Conducted 2/22/2011 by Jaime Destefano.





## APPENDICES



**ENVIRONMENTAL CORPORATION OF AMERICA**

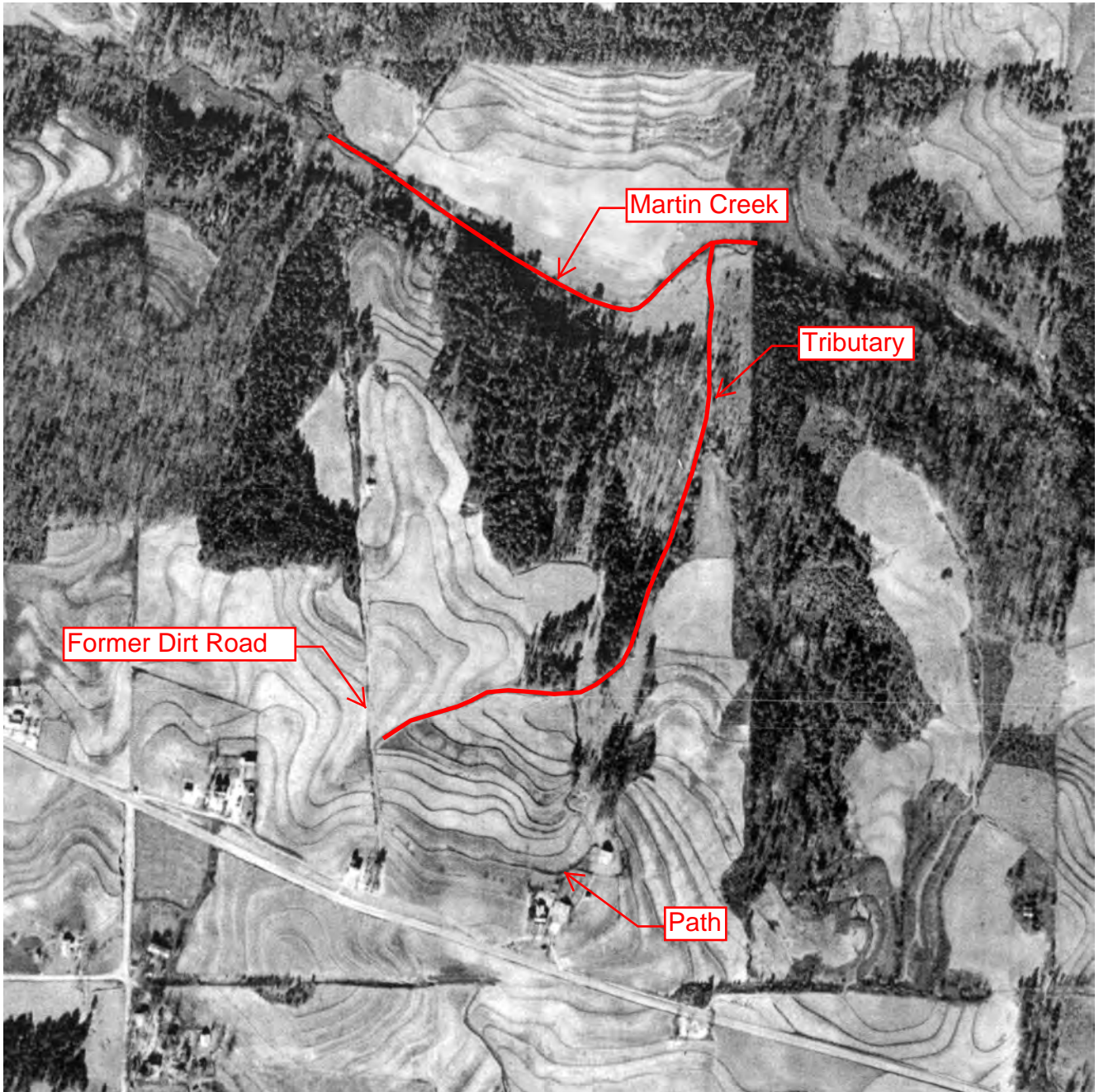
ENVIRONMENTAL | GEOTECHNICAL | WETLANDS | ECOLOGY | CULTURAL RESOURCES

**APPENDIX A**  
**HISTORIC AERIAL PHOTOGRAPHS**



**ENVIRONMENTAL CORPORATION OF AMERICA**

ENVIRONMENTAL | GEOTECHNICAL | WETLANDS | ECOLOGY | CULTURAL RESOURCES



Source: Environmental Data Resources, Inc. - Aerial Photo Decade Package



Turpin  
 707 Fairview Road  
 Stockbridge, Henry County, Georgia



ECA Proj. K-555-6

1939 Aerial Photograph





Source: Environmental Data Resources, Inc. - Aerial Photo Decade Package



Turpin Farmstead  
707 Fairview Road  
Stockbridge, Henry County, Georgia  
Figure 16: 1939 Aerial Photograph



ECA Proj. K-555-6





Source: Environmental Data Resources, Inc. - Aerial Photo Decade Package



Turpin Farmstead  
707 Fairview Road  
Stockbridge, Henry County, Georgia  
Figure 17: 1950 Aerial Photograph



ECA Proj. K-555-6





Source: Environmental Data Resources, Inc. - Aerial Photo Decade Package



Turpin Farmstead  
707 Fairview Road  
Stockbridge, Henry County, Georgia  
Figure 18: 1964 Aerial Photograph



ECA Proj. K-555-6





Source: Environmental Data Resources, Inc. - Aerial Photo Decade Package



Turpin Farmstead  
707 Fairview Road  
Stockbridge, Henry County, Georgia  
Figure 19: 1971 Aerial Photograph



ECA Proj. K-555-6



Source: Environmental Data Resources, Inc. - Aerial Photo Decade Package



Turpin Farmstead  
707 Fairview Road  
Stockbridge, Henry County, Georgia  
Figure 20: 1986 Aerial Photograph



ECA Proj. K-555-6





Source: Environmental Data Resources, Inc. - Aerial Photo Decade Package



Turpin Farmstead  
707 Fairview Road  
Stockbridge, Henry County, Georgia  
Figure 21: 1989 Aerial Photograph



ECA Proj. K-555-6





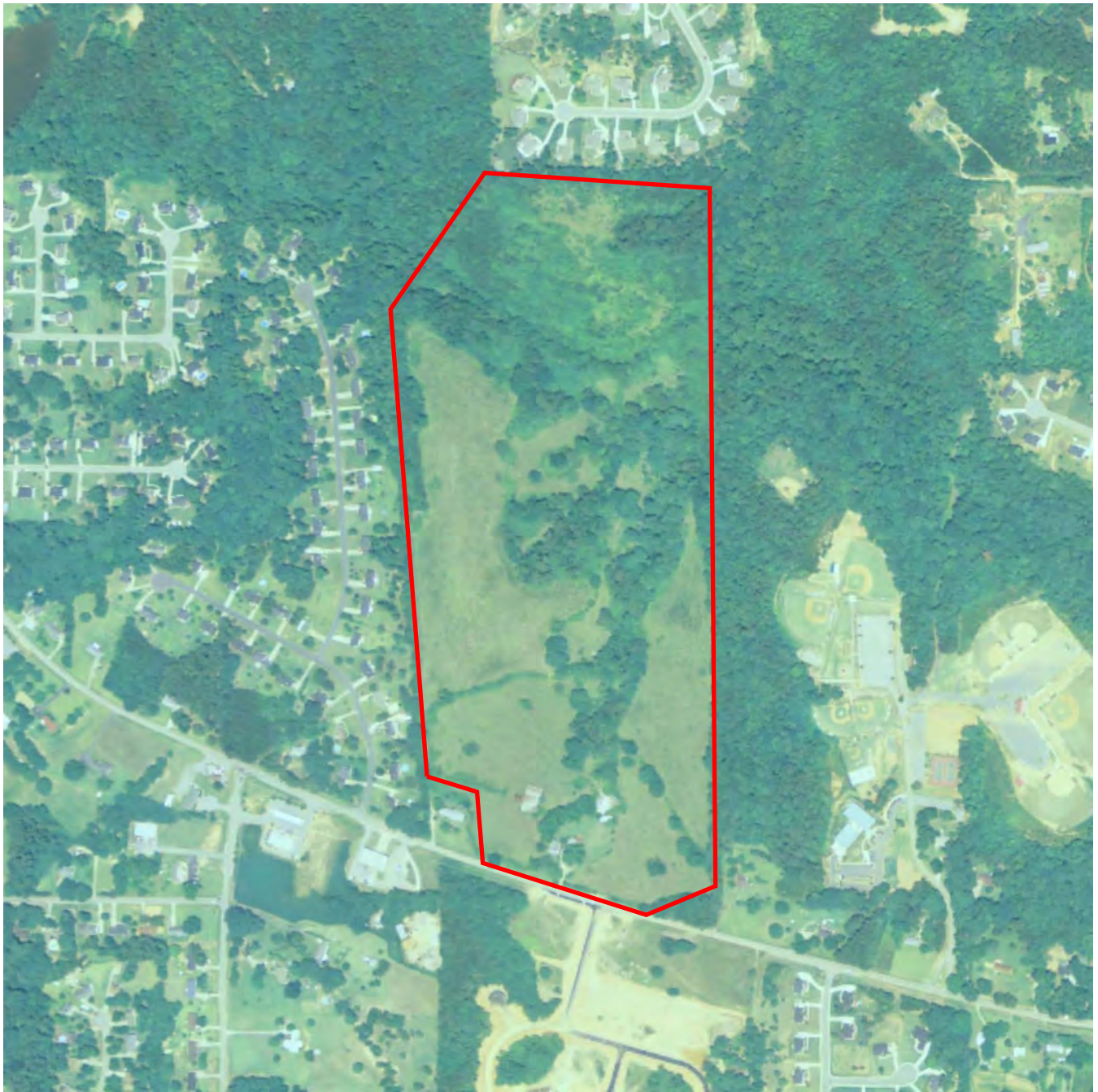
Source: Environmental Data Resources, Inc. - Aerial Photo Decade Package



Turpin Farmstead  
707 Fairview Road  
Stockbridge, Henry County, Georgia  
Figure 22: 1993 Aerial Photograph



ECA Proj. K-555-6



Source: Environmental Data Resources, Inc. - Aerial Photo Decade Package



Turpin Farmstead  
707 Fairview Road  
Stockbridge, Henry County, Georgia  
Figure 24: 2006 Aerial Photograph



ECA Proj. K-555-6





Source: Environmental Data Resources, Inc. - Aerial Photo Decade Package



Turpin Farmstead  
707 Fairview Road  
Stockbridge, Henry County, Georgia  
Figure 25: 2007 Aerial Photograph



ECA Proj. K-555-6



**APPENDIX B**

**PHOTOGRAPH LOG, PROOF SHEETS, AND SKETCH MAPS SHOWING PHOTOGRAPH  
LOCATION**



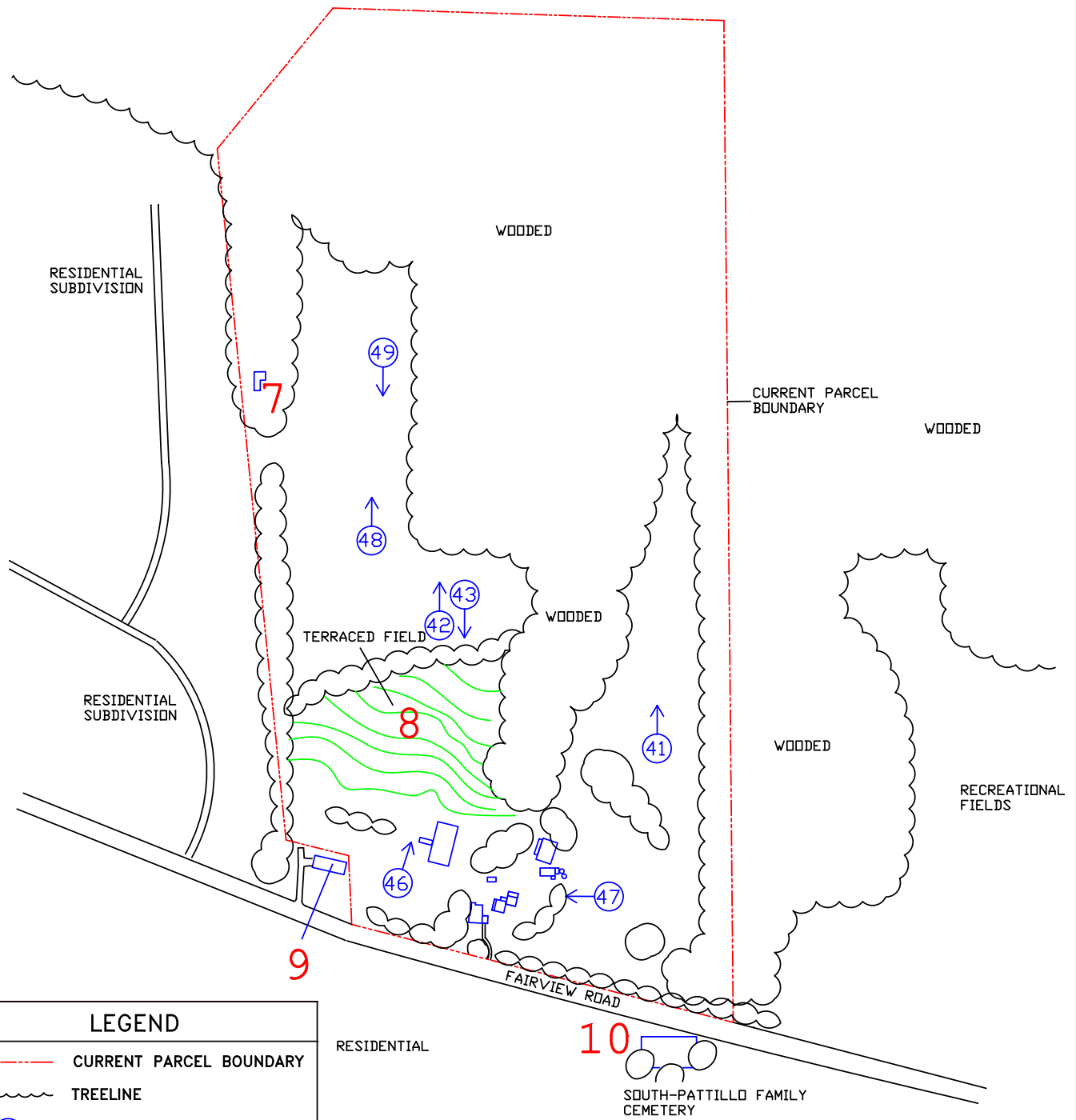
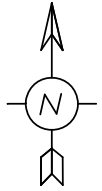
**ENVIRONMENTAL CORPORATION OF AMERICA**

ENVIRONMENTAL | GEOTECHNICAL | WETLANDS | ECOLOGY | CULTURAL RESOURCES

RESOURCE KEY

- 7 L-Cottage
- 8 Terraced Agricultural Field
- 9 Ranch House
- 10 South-Pattillo Family Cemetery

RESIDENTIAL  
SUBDIVISION



LEGEND

- - - CURRENT PARCEL BOUNDARY
- TREELINE
- ① → PHOTOGRAPH ORIENTATION

RESIDENTIAL

10

SOUTH-PATTILLO FAMILY  
CEMETERY

NOT TO SCALE

Turpin Farmstead  
707 Fairview Road  
Stockbridge, Henry County, Georgia  
Overall Sketch Map and  
Contextual Photograph Locations



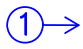
SOURCE: ECA Site Visit, Survey & 2010 Google  
Earth Image

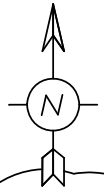
DRAWN BY: MKT      DATE: 7/8/2011  
ECA File: L:/%/K555\_overall.dwg



ECA Project #: K-555-6

**LEGEND**

-  CURRENT PARCEL BOUNDARY
-  TREELINE
-  PHOTOGRAPH ORIENTATION



WOODED

WOODED

FAIRVIEW ROAD

**RESOURCE KEY**

- 1 Main House
- 2 Garage and Open Shed
- 3 Open Post Shed
- 4 Milk House and Silos
- 5 Mule Barn
- 6 Pole Barn

Turpin Farmstead  
707 Fairview Road  
Stockbridge, Henry County, Georgia  
Central Sketch Map and  
Contextual Photograph Locations

SOURCE: ECA Site Visit, Survey & 2010 Google  
Earth Image

DRAWN BY: JXD      DATE: 7/8/2011  
ECA File: L:/%/K555.dwg



ECA Project #: K-555-6



**Turpin Farmstead**  
**Stockbridge, Henry County, Georgia**  
**Photographers: Jaime Destefano and Michelle Taylor, ECA**  
**Photos Taken: February 22, 2011**

| <b>Image Number</b> | <b>Resource No./Name</b> | <b>File Name</b>         | <b>Description</b>             |
|---------------------|--------------------------|--------------------------|--------------------------------|
| 1                   | 1 - Main House           | Turpin_Res1_Nview_001    | Front (South) Façade           |
| 2                   | 1 - Main House           | Turpin_Res1_Sview_002    | Rear (North) Façade            |
| 3                   | 1 - Main House           | Turpin_Res1_NEview_003   | Southwest Oblique              |
| 4                   | 1 - Main House           | Turpin_Res1_SWview_004   | Northeast Oblique              |
| 5                   | 2- Open Garage/Shed      | Turpin_Res2_Nview_005    | Southeast Façade               |
| 6                   | 2- Open Garage/Shed      | Turpin_Res2_NWview_006   | East Façade                    |
| 7                   | 2- Open Garage/Shed      | Turpin_Res2_SWview_007   | Northeast Oblique              |
| 8                   | 3- Open Post Shed        | Turpin_Res3_Wview_008    | East Façade                    |
| 9                   | 3- Open Post Shed        | Turpin_Res3_NWview_009   | Southeast Oblique              |
| 10                  | 3- Open Post Shed        | Turpin_Res3_NEview_010   | Southwest Oblique              |
| 11                  | 4 - Milk House and Silos | Turpin_Res4_Nview_011    | Front (South) Façade and Silos |
| 12                  | 4 - Milk House and Silos | Turpin_Res4_Eview_012    | West Façade                    |
| 13                  | 4 - Milk House and Silos | Turpin_Res4_interior_013 | Interior View of Milk House    |
| 14                  | 4 - Milk House and Silos | Turpin_Res4_interior_014 | Interior View of Milk House    |
| 15                  | 5 - Mule Barn            | Turpin_Res5_NEview_015   | Southwest Façade               |
| 16                  | 5 - Mule Barn            | Turpin_Res5_interior_016 | Interior View of Mule Barn     |
| 17                  | 5 - Mule Barn            | Turpin_Res5_interior_017 | Interior View of Mule Barn     |
| 18                  | 5 - Mule Barn            | Turpin_Res5_SEview_018   | Northwest Façade               |
| 19                  | 5 - Mule Barn            | Turpin_Res5_interior_019 | Interior View of Mule Barn     |
| 20                  | 6 - Pole Barn            | Turpin_Res6_NWview_020   | Southeast Façade               |
| 21                  | 6 - Pole Barn            | Turpin_Res6_SWview_021   | Northeast Oblique              |
| 22                  | 6 - Pole Barn            | Turpin_Res6_NWview_022   | Southeast Oblique              |
| 23                  | 6 - Pole Barn            | Turpin_Res6_NEview_023   | Southwest Façade               |
| 24                  | 6 - Pole Barn            | Turpin_Res6_SEview_024   | Northwest Oblique              |
| 25                  | 6 - Pole Barn            | Turpin_Res6_SWview_025   | Northeast Façade               |
| 26                  | 6 - Pole Barn            | Turpin_Res6_interior_026 | Interior View of Pole Barn     |
| 27                  | 7 - L-Cottage            | Turpin_Res7_Wview_027    | Rear (East) Façade             |

**Turpin Farmstead**  
**Stockbridge, Henry County, Georgia**  
**Photographers: Jaime Destefano and Michelle Taylor, ECA**  
**Photos Taken: February 22, 2011**

| <b>Image Number</b> | <b>Resource No./Name</b>            | <b>File Name</b>       | <b>Description</b>                                                          |
|---------------------|-------------------------------------|------------------------|-----------------------------------------------------------------------------|
| 28                  | 7 - L-Cottage                       | Turpin_Res7_Wview_028  | Rear (East) Façade                                                          |
| 29                  | 7 - L-Cottage                       | Turpin_Res7_Nview_029  | Former Access Road                                                          |
| 30                  | 8 - Terraced Agricultural Fields    | Turpin_Res8_SEview_030 | Terraced Agricultural Field                                                 |
| 31                  | 8 - Terraced Agricultural Fields    | Turpin_Res8_SEview_031 | Terraced Agricultural Field                                                 |
| 32                  | 8 - Terraced Agricultural Fields    | Turpin_Res8_SEview_032 | Terraced Agricultural Field                                                 |
| 33                  | 8 - Terraced Agricultural Fields    | Turpin_Res8_SWview_033 | Terraced Agricultural Field                                                 |
| 34                  | 8 - Terraced Agricultural Fields    | Turpin_Res8_NEview_034 | Terraced Agricultural Field                                                 |
| 35                  | 9 - Ranch House                     | Turpin_Res9_Nview_035  | Front (South) Façade                                                        |
| 36                  | 9 - Ranch House                     | Turpin_Res9_SEview_036 | Northwest Oblique                                                           |
| 37                  | 10 - Pattillo-South Family Cemetery | Turpin_Res10_Wview_037 | Pattillo-South Family Cemetery                                              |
| 38                  | 10 - Pattillo-South Family Cemetery | Turpin_Res10_Wview_038 | John South Gravestone (1796-1891)                                           |
| 39                  | 10 - Pattillo-South Family Cemetery | Turpin_Res10_Wview_039 | Lilla A. Pattillo (1866-1894) and Magnolia Pattillo (1887-1901) Gravestones |
| 40                  | Contextual                          | Turpin_Contextual_040  | Milk House, Silos, and Mule Barn                                            |
| 41                  | Contextual                          | Turpin_Contextual_041  | Agricultural Field                                                          |
| 42                  | Contextual                          | Turpin_Contextual_042  | Agricultural Field                                                          |
| 43                  | Contextual                          | Turpin_Contextual_043  | Main House, Pole Barn, and Open Post Shed                                   |
| 44                  | Contextual                          | Turpin_Contextual_044  | Main House and Associated Outbuildings                                      |
| 45                  | Contextual                          | Turpin_Contextual_045  | Former Field Road                                                           |
| 46                  | Contextual                          | Turpin_Contextual_046  | Terraced Agricultural Field                                                 |
| 47                  | Contextual                          | Turpin_Contextual_047  | Main House, Associated Outbuildings, Milk House, and Silos                  |
| 48                  | Contextual                          | Turpin_Contextual_048  | Agricultural Field                                                          |
| 49                  | Contextual                          | Turpin_Contextual_049  | Agricultural Field                                                          |

**Turpin Farmstead**  
**Photographed by: Jaime Destefano and Michelle Taylor of ECA**  
**February 22, 2011**

**Resource 1 – Main House**



Photograph 001  
Northerly View of Front (South) Façade



Photograph 002  
Southerly View of Rear (North) Façade



Photograph 003  
Northeasterly View of Southwest Oblique



Photograph 004  
Southwesterly View of Northeast Oblique



**Turpin Farmstead**  
**Photographed by: Jaime Destefano and Michelle Taylor of ECA**  
**February 22, 2011**

**Resource 2 – Open Garage and Open Shed**



Photograph 005  
Northerly View of Southeast Facade



Photograph 006  
Northwesterly View of East Facade



Photograph 007  
Southwesterly View of Northeast Oblique

**Turpin Farmstead**  
**Photographed by: Jaime Destefano and Michelle Taylor of ECA**  
**February 22, 2011**

**Resource 3 – Open Post Shed**



Photograph 008  
Westerly View of East Facade



Photograph 009  
Northwesterly View of Southeast Oblique



Photograph 010  
Northeasterly View of Southwest Oblique



**Turpin Farmstead**  
**Photographed by: Jaime Destefano and Michelle Taylor of ECA**  
**February 22, 2011**

**Resource 4 – Milk House and Silos**



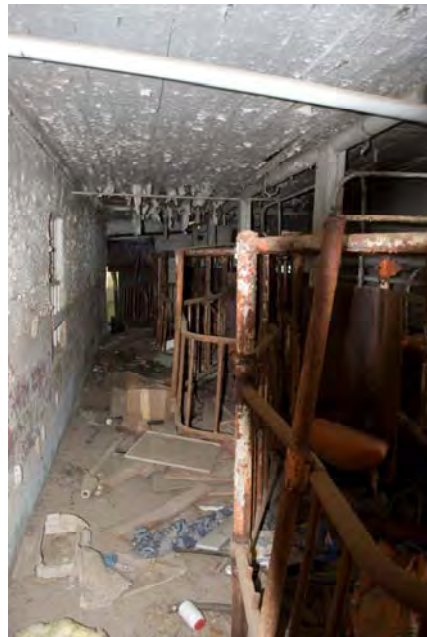
Photograph 011  
Northerly View of Front (South) Façade and Silos



Photograph 012  
Easterly View of West Facade



Photograph 013  
Interior View of Milk House



Photograph 014  
Interior View of Milk House



**Turpin Farmstead**  
**Photographed by: Jaime Destefano and Michelle Taylor of ECA**  
**February 22, 2011**

**Resource 5 – Mule Barn**



Photograph 015  
Northeasterly View of Southwest Facade



Photograph 016  
Interior View of Mule Barn



Photograph 017  
Interior View of Mule Barn



Photograph 018  
Southeasterly View of Northwest Facade



Photograph 019  
Interior View of Mule Barn

**Turpin Farmstead**  
**Photographed by: Jaime Destefano and Michelle Taylor of ECA**  
**February 22, 2011**

**Resource 6 – Pole Barn**



Photograph 020  
Northwesterly View of Southeast Facade



Photograph 021  
Southwesterly View of Northeast Oblique



Photograph 022  
Northwesterly View of Southeast Oblique



Photograph 023  
Northeasterly View of Southwest Facade





Photograph 024  
Southeasterly View of Northwest Oblique



Photograph 025  
Southwesterly View of Northeast Facade



Photograph 026  
Interior View of Pole Barn

**Turpin Farmstead**  
**Photographed by: Jaime Destefano and Michelle Taylor of ECA**  
**February 22, 2011**

**Resource 7 –L-Cottage**



Photograph 027  
Westerly View of Rear (East) Facade



Photograph 028  
Westerly View of Rear (East) Façade



Photograph 029  
Northerly View of Former Access Road

**Turpin Farmstead**  
**Photographed by: Jaime Destefano and Michelle Taylor of ECA**  
**February 22, 2011**

**Resource 8 – Terraced Agricultural Fields**



Photograph 030  
Southeasterly View of Terraced Agricultural Field



Photograph 031  
Southeasterly View of Terraced Agricultural Field



Photograph 032  
Southeasterly View of Terraced Agricultural Field



Photograph 033  
Southwesterly View of Terraced Agricultural Field





Photograph 034  
Northeasterly View of Terraced Agricultural Field

**Turpin Farmstead**  
**Photographed by: Jaime Destefano and Michelle Taylor of ECA**  
**February 22, 2011**

**Resource 9 – Ranch House**



Photograph 035  
Northerly View of Front (South) Facade



Photograph 036  
Southeasterly View of Northwest Oblique

**Turpin Farmstead**  
**Photographed by: Jaime Destefano and Michelle Taylor of ECA**  
**February 22, 2011**

**Resource 10 – Pattillo - South Family Cemetery**



Photograph 037  
Westerly View of Pattillo - South Family Cemetery



Photograph 038  
Gravestone - John South 1796 - 1891



Photograph 039  
Gravestone – Lilla A. Pattillo 1866 – 1894 & Magnolia Pattillo 1887 - 1901



**Turpin Farmstead**  
**Photographed by: Jaime Destefano and Michelle Taylor of ECA**  
**February 22, 2011**

**Contextual Photographs**



Photograph 040  
Northeasterly View of Milk House, Silos, and  
Mule Barn



Photograph 041  
Northernly View of Agricultural Field



Photograph 042  
Northernly View of Agricultural Field



Photograph 043  
Southernly View of Main House, Pole Barn and  
Open Post Shed

**Turpin Farmstead**  
**Photographed by: Jaime Destefano and Michelle Taylor of ECA**  
**February 22, 2011**

**Contextual Photographs**



Photograph 044  
Southwesterly View of Main House and Associated  
Outbuildings



Photograph 045  
Northeasterly View of Former Field Road



Photograph 046  
Northeasterly View of Terraced Agricultural Field



Photograph 047  
Westerly View of Main House, Associated  
Outbuildings, Milk House, and Silos

**Turpin Farmstead**  
**Photographed by: Jaime Destefano and Michelle Taylor of ECA**  
**February 22, 2011**

**Contextual Photographs**



Photograph 048  
Northerly View of Agricultural Field



Photograph 049  
Southerly View of Agricultural Field



**APPENDIX C**  
**HISTORIC RECORDS**



**ENVIRONMENTAL CORPORATION OF AMERICA**

ENVIRONMENTAL | GEOTECHNICAL | WETLANDS | ECOLOGY | CULTURAL RESOURCES

**CHAIN OF TITLE AND  
ASSOCIATED PROBATE RECORDS**



**ENVIRONMENTAL CORPORATION OF AMERICA**

ENVIRONMENTAL | GEOTECHNICAL | WETLANDS | ECOLOGY | CULTURAL RESOURCES

**Turpin Dairy Farm – Land Lot 190 in District 12  
Chain of Title**

| <b>Date of Record</b> | <b>Grantor</b>         | <b>Grantee</b>                      | <b>Record Book/Page</b> | <b>Description/Relevant Notes</b>                                                                                                                                                                                                                                                       |
|-----------------------|------------------------|-------------------------------------|-------------------------|-----------------------------------------------------------------------------------------------------------------------------------------------------------------------------------------------------------------------------------------------------------------------------------------|
| 1/29/2002             | Clyde M. Turpin        | Ronald Marion Turpin                | 4771/60                 | Conveyance of 73 acres as described in Deed Book 18, Page 504. The deed makes reference to a plat survey made for C.S. Pattillo Talmon dated 10/1915.                                                                                                                                   |
| 5/22/1948             | C.C. White's heirs     | Clyde M. Turpin                     | 39/519                  | Conveyance of 73 acres as described in Deed Book 18, Page 504. The deed makes reference to a plat survey made for C.S. Pattillo Talmon dated 10/1915.                                                                                                                                   |
| 10/8/1921             | M.C. White             | C.C. White                          | 18/504                  | Conveyance of 73 acres of land from the east side of the former 128-acre parcel. The deed indicates the 73-acre parcel is located within the middle of Land Lot 190. It references the "Atlanta-McDonough Public Road" located south of the lot, and an old abandoned road to the west. |
| 12/18/1905            | J.N. Willingham        | M.C. White                          | 6/384                   | Conveyance of approximately 128 acres. It appears that the small, 2-acre parcel located at the southwest corner of the current lot was subdivided during the ownership of J.N. Willingham sometime between 1896 and 1905.                                                               |
| 1/24/1896             | Newton Willingham      | J.N. Willingham                     | 2/342                   | Conveyance of same 130 acres of land as described in Deed Book 1, Page 31-32                                                                                                                                                                                                            |
| 3/31/1893             | Executor of John South | Newton Willingham & J.N. Willingham | 1/31-32                 | Conveyance (at auction) of approximately 130 acres of the original 202.5-acre parcel of lot 190. The deed indicates that the remaining 72.5 acres of the original lot had previously been subdivided. The date of these first subdivisions is unknown.                                  |
| 3/7/1846              | J.D. Beers et.al       | John South                          | L/29                    | Conveyance of approximately 202.5 acres.                                                                                                                                                                                                                                                |



| <b>Date of Record</b> | <b>Grantor</b>                   | <b>Grantee</b>      | <b>Record Book/Page</b> | <b>Description/Relevant Notes</b>                                                                                                                                                                                   |
|-----------------------|----------------------------------|---------------------|-------------------------|---------------------------------------------------------------------------------------------------------------------------------------------------------------------------------------------------------------------|
| 7/31/1840             | Isaac R. St. John                | Joseph D. Beers     | J/823                   |                                                                                                                                                                                                                     |
| 7/19/1827             | John S. Holt                     | Isaac R. St. John   | A/550                   | Indenture of three parcels of land in three different counties. One of the parcels is the 202.5-acre tract of land in Land District 12, Lot 190 (the record is dated almost one year prior to previous "indenture") |
| 6/24/1828             | Nimrod <u>Rages</u> <sup>1</sup> | John S. Holt        | Unknown                 | An apparent "indenture" dated for 1828 conveyed the 202.5-acre parcel of land to Holt (referenced in Deed Book A, Page 550)                                                                                         |
| 7/1/1822              | Governor John Clarke             | Nimrod <u>Rages</u> | Unknown                 | First land grant of the 202.5-acre parcel (referenced in Deed Book A, Page 550)                                                                                                                                     |

---

<sup>1</sup> The spelling of the last name may not be accurate. The name is transcribed from Deed Book A, Page 550

**Henry County Deed Book A Page 550-551**

Transcription completed by Jaime L. Destefano of ECA

State of Georgia:

This Indenture made the nineteenth day of July in the year of our Lord One thousand Eight hundred and twenty seven and in the fifty-second year of the Independence of the United States of America between John S. Holt of the city Augusta and State of Georgia on the one part and Isaac R. St. John of the city and state of the aforesaid of the other part, that the said John S. Holt for and in consideration of the sum of seven hundred dollars to him in hand will and truly paid by the said Isaac R. St. John at or before the sealing and delivery of these presents. The receipt whereof is hereby Acknowledged hath granted bargained, sold, released and confirmed and by these presents doth grant, bargain, sell, release, and confirm unto the said Isaac R., his heirs and \_\_\_\_\_ all that lot or parcel of land containing five hundred acres be the same more or less situated lying and being in the county of Franklin State aforesaid, on the waters of the north fork of Broad River which will more fully appear by reference to a grant of said land to David T\_\_\_\_\_ from and under the hand of his Excellency the Governor dated twenty-seventh day of June seventeen hundred and eight-six, and bounded northeasterly by John Herrington and Julius Howard land, southeasterly by an old line in part and on all other sides by vacant land at the time of survey – also another lot of parcel of land containing 250 acres situated lying and being in the south district of Gwinnett County, State aforesaid and known and distinguished in the House of said District by the number 250 and having said form shape and marks as appear by a plat of the same described to a grant of said lot to \_\_\_\_\_ Walter? by his Excellency the Governor being dated the nineteenth day of February 1828 – also one other lot or parcel of land containing 202 ½ acres situated lying in the 12<sup>th</sup> district of Henry County by state aforesaid which said lot is \_\_\_\_\_ in the plan of said district by the number 190 having such shape and form and marks as appear by a plat of the same aforesaid to a grant of said lot to Nimrod Rages? by his Excellency John Clarke Governor of said State dated the first date of July 1822 and by him conveyed to said Holt by an Indenture bearing date the 24<sup>th</sup> day of June 1828 – Together with all and singular the rights, members and appurtenances as thereof whatsoever to the said lot or parcel of land being belonging or in any one appearing and the remainder \_\_\_\_\_ Rents \_\_\_\_\_ and \_\_\_\_\_ thereof and of any part thereof to have and to the said lot or parcel of land and all and singular the premises and appurtenances there unto belonging as aforesaid and every part thereof unto the said Isaac R. St. John his heirs, and assigns to the only use, benefit, and \_\_\_\_\_ of the said Isaac R. St. John, his heirs and \_\_\_\_\_ forever and the said John S. Holt and His heirs the said lots or parcels of land and \_\_\_\_\_ aforesaid and every part thereof unto the said Isaac R. St. John His heirs and \_\_\_\_\_ against him the said John S. Holt and his heirs and all and every other \_\_\_\_\_ on or \_\_\_\_\_ whatsoever shall and will warrant and forever defend by these \_\_\_\_\_. In Witness whereof the said John S. Holt hath hereunto set his land and seal the day and year first above \_\_\_\_\_ sealed and delivered in the presence of Samuel H. Peek, John S. Holt, William B. Thomas



550

State of Georgia  
 This Indenture Made the nineteenth  
 day of July in the year of Our Lord One thousand Eight  
 hundred and twenty seven and in the fifty second year  
 of the Independance of the United States of America between  
 John S. Holt of the City of Augusta and State of Georgia  
 on the One part and Isaac N. John of the City and State  
 Aforesaid of the Other part Witnesseth that the said  
 John S. Holt for and Inconsideration of the sum of seven  
 hundred Dollars to him in hand well and truly paid  
 by the said Isaac N. John at or before the sealing and delivery  
 of these presents the Receipt whereof is hereby acknowledged  
 hath granted bargained sold Released and confirmed  
 and by these presents doth grant bargain sell Release and confirm  
 unto the said Isaac N. John his heirs and assigns all that lot or  
 parcel of Land containing five hundred Acres be the same  
 more or less situate lying and being in the County of Frank  
 -lin State Aforesaid on the Waters of the North fork of Broad  
 River which will more fully appear by Reference to a grant  
 of said Land to David Swondet from and under the hand  
 of his Excellency the Governor dated twenty seventh day of June  
 Seventeen hundred and Eighty Six and bounded North  
 Easterly by John Harrington and Julius Howard land South  
 Easterly by an old life in part and on all other sides by  
 vacant Land at the time of survey - also an other lot of part  
 of Land containing Two hundred and fifty Acres situate  
 lying and being in the Sixth District of Guinnett County  
 State Aforesaid and known and distinguished in the plan of  
 said District by the number Two hundred and fifty and  
 having such form shape and marks as appear by a plat  
 of the same annexed to a grant of said lot to John Hatcher by his  
 Excellency the Governor being dated the nineteenth day of February  
 1828 - also an other lot or parcel of Land containing two  
 hundred two and a half acres situate lying in the twelfth district  
 of Henry County State Aforesaid which said lot is shown  
 in the plan of said District by the number One hundred  
 and ninety having such shape form and marks as appear  
 by a plat of the same annexed to a grant of said lot  
 to Minrod Hays by his Excellency John Clarke Governor of said  
 State dated the first day of July 1822 and by him conveyed  
 to said Holt by an Indenture bearing date the 21<sup>st</sup> day of  
 June 1828 - Together with all kind and singular the rights  
 Members and Appurtenances thereof whatsoever to the said  
 lot or parcel of Land being belonging or in any way appertain  
 ing and the remainder Reservations Rights issues and profits  
 thereof and of any part hereof to have and to the said  
 lot or parcel of Land and all and singular the premises



551

551 and Assurances therein to belonging as aforesaid and every part thereof unto the said Isaac N. St. John his heirs and Assigns to the Only Joseph We benefit and behoof of the said Isaac N. St. John his heirs and Assigns former and the said John S. Holt and his heirs the said lots or parcels of land and premises aforesaid and every part thereof unto the said Isaac N. St. John his heirs and Assigns against him the said John S. Holt and his heirs and all and every other person or persons whomsoever shall and will warrant & forever defend by these presents In Witness whereof the said John S. Holt hath hereunto set his hand and seal the day and year first above written sealed and delivered in the presence of Saml. H. Lee to

John S. Holt Seal

William B Thomas JP

Recorded this 1st day of July 1828 Jm Wardwell

Georgia  
Walton County  
This Indenture Made the 19th day of March in the year of our Lord 1828



29

his heirs and assigns together with all and singular the rights members  
and appurtenances in any manner belonging to his and to their  
heirs forever in full simple and the said  
Seaborn Jones for himself his heirs Executors and Administrators the said  
bargain promises with the said Andrew W. Walker his heirs and assigns  
will warrant and forever defend the right and title to the same thing  
against themselves and against the claims of all and every other person  
or persons whatsoever his witness whom the said Seaborn Jones hath hereunto  
set his hand and affixed seal the day and year first written signed sealed  
and delivered in the presence of  
George S. Combs  
John Humbell J.P. Recorded the 7th day of April 1846  
John Goodwin Clerk

This Indenture made the twentieth day of March in the year one thousand  
eight hundred and forty six Between Joseph D. Beers of the City County  
and State of New York Groomer and Mary his wife parties of the first  
part and John South of the County of Henry in the State of Georgia party  
of the second part Witnesseth that the said parties of the first part for and in  
consideration of the sum of Two hundred Dollars lawful money of the United  
States of America to them in hand paid by the said party of the second part  
at or before the making and delivery of these presents the receipt whereof  
is hereby acknowledged have granted bargain sold aliened released release  
conveyed and confirmed and by these presents do grant bargain sell  
alien release release convey and confirm unto the said party of the  
second part and to his heirs and assigns forever all that certain piece  
or parcel of land situate lying and being in the County of Henry in the  
State of Georgia described as follows in the Tract District Henry County  
Lot Number One hundred and Ninety (No 190) Containing by estimation  
Two hundred and two and one half Acres of land be the same more or less  
together with all and singular the tenements hereditaments and appurtenances  
thereunto belonging or in any wise appertaining and the reversions and reversion  
remainders and remainders rents issues and profits thereof and also all the  
estate right title interest claim and right of claim property possession claim  
and demand whatsoever as well in law as in equity of the said parties of the  
first part of or to the above described premises and every part and parcel  
thereof with the appurtenances to have and to hold all and singular the  
above mentioned and described premises together with the appurtenances  
unto the said party of the second part his heirs and assigns for ever and  
quit and peaceable possession of the said party of the second part his heirs  
and assigns against the said party of the first part his heirs and against  
all and every person and persons whomsoever lawfully claiming or to claim  
the same shall and will warrant and by these presents forever defend  
in witness whereof the said parties of the first part have hereunto set their  
hands and seal the day and year first above written sealed and delivered  
in the presence of  
John Ripell  
Mary Beers Groomer  
J. D. Beers  
Mary Beers



bought by the said Thos. D. Stewart for the sum of Twenty four hundred Dollars in making the levy and in making the Deed by Sheriff to said Stewart the land District and lot numbers were confused and errors were made as to number of District and lots This deed therefore is made to said Thos. D. Stewart to correct the errors and to perfect in him the title to the above described land he being a bona fide purchaser and having accounted to me for the sum of Twelve hundred Dollars (in notes land &c) in addition to the purchase price of Twenty four hundred Dollars paid to Sheriff To have and to hold the said bargained premises together with all and singular the rights Members and appurtenances thereof to the same being belonging or in anywise appertaining to the aforesaid proper use benefit and behoof of him the said party of the second part his heirs executors Administrators and assigns in fee simple And the said party of the first part his heirs executors and administrators the said bargained premises unto the said party of the second part his heirs executors and Administrators And all and every other person or persons shall and will warrant and forever defend by virtue of these presents In witness whereof said party of the first part has hereunto set his hand and affixed his seal the day and year first above written signed sealed and delivered

in presence of  
L. H. Fargason  
A. J. Burns J. P.

W. H. H. Barham (seal)

Recorded March 31<sup>st</sup> 1893  
Luther Pair clerk

State of Georgia } Know all men by these presents that the  
Henry County } St. M. South and Seth Carroll duly Constituted  
executors of the estate both real or personal of  
John South late of Henry County deceased by virtue of an  
order of the Court of Ordinary of Henry County granted at the  
regular August term Eighteen hundred and ninety one of said  
Court notice of application for said order having been  
previously published in terms of the law after advertising  
the same for sale in terms of the law did on the first  
Tuesday in October Eighteen hundred and ninety one  
within legal hours of sale put up and expose for sale  
at public outcry before the Court house door at McDonough  
in the County of Henry the real estate hereinafter described  
where the same was knocked off to Newton Willingham  
J. H. Willingham and S. C. South of the County of Henry  
being the highest and best bidder at the price of Nineteen  
hundred and fourteen Dollars Cash for and in  
consideration of the sum of Nineteen hundred and  
fourteen Dollars cash in hand paid by the said Newton  
Willingham J. H. Willingham and S. C. South the  
receipt whereof is hereby acknowledged me the said N. M.  
South and Seth Carroll as executors as aforesaid have



granted bargained and sold and do by these presents grant  
 bargain and sell so far as the Office of Executor authorized them  
 unto the said Newton Willingham J N Willingham and  
 S. C. South the following described real estate to wit:  
 One hundred and thirty acres of land More or less lying  
 and being in the 12<sup>th</sup> District of Henry County and being part  
 of lot No. 190 embracing all of said lot except  $\frac{1}{4}$  acres in  
 the South West corner said to James Henry and M. D. Ford  
 and  $6\frac{1}{2}$  More or less off of the east side said to R. D. Carrall  
 The above described land bounded on the north by the lands  
 of Skeltan & Cook on the South by the lands of Coleman White  
 On the East by lands of R. D. Carrall on the west by N. M. South  
 M. D. Ford and Wm M. Luttre I do have and to hold the same  
 together with all the rights Members and appurtenances thereunto  
 belonging unto the said Newton Willingham J N Willingham  
 and S. C. South their heirs and assigns forever in as full and  
 ample a manner as the same was seized possessed and  
 enjoyed by the said John South at the time of his death  
 In witness whereof we the said N. M. South and Seth Carrall as executors  
 as aforesaid have hereunto set our hands and affixed  
 our Seals this 16<sup>th</sup> day of November Eighteen hundred and  
 Ninetyone

Signed sealed and delivered } N. M. South (LS)  
 in presence of } S. C. Carrall (LS)  
 J. W. Thurman  
 W. H. Clark J. O.

Recorded March 31<sup>st</sup> 1893  
 Luther Pair clerk

State of Georgia } This Indenture Made this the 6<sup>th</sup> day of  
 Henry County } June 1892 Between S. C. South and  
 Newton Willingham of the County  
 aforesaid Witnesses that the said S. C. South for and in  
 the consideration of the sum of six hundred and thirty  
 eight Dollars the receipt whereof is hereby acknowledged  
 does hereby sell and convey unto the said Newton Willingham  
 his heirs and assigns a certain tract or parcel of land  
 it being a third part which is all that the said S. C. South  
 claimed in lot No. (190) One hundred and ninety situated  
 in the County of Henry



**Henry County Deed Book 1 Page 31-32**

Transcription completed by Jaime L. Destefano of ECA

State of Georgia, Henry County:

Know all men by these presents that we N.M. South and Seth Carrall duly constituted executors of the setae both real or personal of John South late of Henry County deceased by virtue of an order of the Court of Ordinary of Henry County granted at the regular August term Eighteen hundred and ninety-one of said Court – Nature of application for said order having been previously published in terms of the law after advertising the same for sale in terms of the law did on the first Tuesday in October, eithen hundred and ninety one within legal \_\_\_\_ of sale put up and expose for sale of at public \_\_\_\_ before the Courthouse door at McDonough in the County of Henry the real estate berein of the described when the same was knocked off to Newton Willingham, J.N. Willingham, and J. B. South of the County of Henry being the highest and best bidders the prive of nineteen hundred and fourteen dollars have for and in consideration of the sum of nineteen hundred and fourteen dollars cash in hand paid by the said Newton Willingham, J.N. Willingham, and S.B. South the receipt whereof is hereby acknowledged we the said N.M. South and Seth Carrall as executors as aforesaid have granted, bargained, and sold, and do by these present grant, bargain, and sell so for as the office of executor authorization unto the said Newton Willingham, J.N. Willingham, and S.B. South the following described real estate to wit: one hundred and thirty acres (130) of land more or less lying and being in the 12<sup>th</sup> district of Henry County and being part of lot No. 190 mbracing all of said lot except 4 ½-acres in the southwest corner sold to James Henry and M.D. Ford and 67 ½ - acres more or less off of the east side sold to R.J. Carrall. The above described land bounded on the north by the lands of Skelton and Cook, on the south by the lands of Coleman White, on the east by lands of R.J. Carrall, on the west by N.M. South, M.D. Ford and William McIntire. To have and to hold the same together with all the rights, members and appurtenances thereunto belonging unto the said Newton Willingham, J.N. Willingham and F. C. South their heirs and assign forever in as full and ample a manner as the same was seized, possessed and enjoyed by the said John South at the time of his death in witness whereof we the said N.M. South and Seth Carrall as executors as aforesaid have hereunto set our hands and affixed our seals this 16<sup>th</sup> day of November eighteen hundred and ninety one







October 8, 1921

In Consideration of the sum of Two Thousand Dollars, to me paid by C.C.White, of the County of Henry, I, M.C.White, do hereby sell and convey unto C.C.White of the County of Henry, heirs and assigns, a tract or parcel of land, which is described as follows: Seventy Three (73) acres of land, more or less, lying and being in the Twelfth (12th) land district in about the middle of Lot. No. 190 in Henry County, Georgia, and bounded on North by Mrs.W.W.Skelton, on East by lands of J.W.Pattillo, on South by M.C.White and the Atlanta and McDonough public road, and on West by land of M.C.White and an old abandoned public road. Same being off the East side of the 128 acre tract of land deeded me 15th day Dec. 1905 by J.M.Willingham.

This deed made in lieu of deed made between the same parties on 12th day Nov. 1920, recorded in Deed Book 16 page 278 in Clerk's Office of Henry Superior Court, and made for the purpose of correcting errors in former deed by giving a more complete and definite description of the said conveyed land.

To Have and to Hold said land and appurtenances unto said C.C.White, his heirs, executors, administrators, and assigns, in fee simple.

I warrant the title to said land against the lawful claims of all persons.

In Witness Whereof, I have hereunto set my hand and affixed my seal this the 6th day of October, 1921.

M. C. White (L.S.)

Signed, sealed and delivered in presence of  
W.H.White  
C.W.South, J.P.Henry County, Georgia.

Stamps \$2.00

Recorded October 8, 1921.

*J. A. Fricke*, Clerk.



May 22, 1948

Book 39

519  
GEORGIA, HENRY COUNTY:

THIS INSTRUMENT made this 22nd day of May, 1948, by and between Mrs. Mary Julia White, Mrs. Saleta Eleanor Wicks, Thomas A. White and William C. White, who are all of the Heirs at Law of C. C. White, late a resident of Henry County, Georgia, Deceased, parties of the first part, and Clyde M. Turpin, party of the second part,

WITNESSETH: That the said parties of the first part for and in consideration of the sum of FIFTY FIVE HUNDRED AND NO HUNDRETHS (\$5500.00) Dollars, in hand paid, the receipt whereof is hereby acknowledged, have granted, bargained, sold and conveyed, and by these presents do grant bargain sell and convey unto the said party of the second part, his heirs and assigns, following described property, to-wit:

All that tract or parcel of land lying and being in the Twelfth (12th) land District of Henry County, Georgia, being Seventy-Three (73) acres of land, more or less, lying about the middle of land lot number One Hundred Ninety (190) of said land District, and bounded as follows: On the north by lands of now or formerly Mrs. W. W. Skelton, on the East by lands of now or formerly W. W. Pattillo, on the South by lands of formerly M. C. White and the Atlanta and McDonough Public Road, and on the West by lands of formerly M. C. White and an old abandoned public Road. Said land being more particularly described by a plat of survey of the same made by Talmon Pattillo, C. S. in October 1915, which said plat is hereby made a part of this description.

Grantors or parties of the first part hereto are the sole and only heirs at law of C. C. White, late a resident of Henry County, Georgia.

In witness whereof

## WILL, MARRIAGE AND CENSUS RECORDS



**ENVIRONMENTAL CORPORATION OF AMERICA**

ENVIRONMENTAL | GEOTECHNICAL | WETLANDS | ECOLOGY | CULTURAL RESOURCES





**Free White Persons - Females - 50 thru 59:** 1  
**Slaves - Males - 10 thru 23:** 3  
**Slaves - Males - 55 thru 99:** 1  
**Slaves - Females - Under 10:** 2  
**Slaves - Females - 10 thru 23:** 1  
**Free White Persons - Under 20:** 2  
**Free White Persons - 20 thru 49:** 2  
**Total Free White Persons:** 6  
**Total Slaves:** 7  
**Total - All Persons (Free White, Slaves, Free Colored):** 13

Original data: Fifth Census of the United States, 1830. (NARA microfilm publication M19, 201 rolls). Records of the Bureau of the Census, Record Group 29. National Archives, Washington, D.C.

ancestry





## 1840 United States Federal Census

Name: **John South**  
 Township: District 622  
 County: Henry  
 State: Georgia  
 Free White Persons - Males - Under 5: 1  
 Free White Persons - Males - 5 thru 9: 2  
 Free White Persons - Males - 40 thru 49: 1  
 Free White Persons - Females - Under 5: 1  
 Free White Persons - Females - 30 thru 39: 1  
 Slaves - Males - 10 thru 23: 1  
 Total - All Persons (Free White, Free Colored, Slaves): 7  
 Persons Employed in Agriculture: 2  
 No. White Persons over 20 Who Cannot Read and Write: 1  
 Free White Persons - Under 20: 4  
 Free White Persons - 20 thru 49: 2  
 Total Free White Persons: 6  
 Total Slaves: 1  
 Total All Persons - Free White, Free

# 1850 United States Federal Census record for J South

SCHEDULE I.—Free Inhabitants in South Carolina in the County of Hampton State South Carolina enumerated by me, on the 31<sup>st</sup> day of Oct. 1850. William H. Smith Ass't Marshal 1277

| 1  | 2    | 3              | DESCRIPTION |     |       | 7      | 8    | 9    | 10 11 12                |                 |                      | 13 |                                                                   |
|----|------|----------------|-------------|-----|-------|--------|------|------|-------------------------|-----------------|----------------------|----|-------------------------------------------------------------------|
|    |      |                | Age         | Sex | Color |        |      |      | Married within the year | Attended School | Value of Real Estate |    | Whether deaf and dumb, blind, insane, idiotic, pauper, or convict |
| 1  |      | C. H. James    | 27          | M   |       | Farmer |      | Geo. |                         |                 |                      |    | 1                                                                 |
| 2  |      | C. H. James    | 25          | M   |       |        |      | "    |                         |                 |                      |    | 2                                                                 |
| 3  |      | M. C. James    | 22          | M   |       |        |      | "    |                         |                 |                      |    | 3                                                                 |
| 4  |      | C. H. James    | 17          | M   |       |        |      | "    |                         |                 |                      |    | 4                                                                 |
| 5  |      | M. C. James    | 14          | M   |       |        |      | "    |                         | 1               |                      |    | 5                                                                 |
| 6  |      | C. H. James    | 12          | M   |       |        |      | "    |                         | 1               |                      |    | 6                                                                 |
| 7  |      | M. C. James    | 10          | M   |       |        |      | "    |                         | 1               |                      |    | 7                                                                 |
| 8  |      | M. C. James    | 11          | M   |       |        |      | "    |                         | 1               |                      |    | 8                                                                 |
| 9  |      | M. C. James    | 6           | M   |       |        |      | "    |                         | 1               |                      |    | 9                                                                 |
| 10 | 1237 | J. H. James    | 18          | M   |       |        | 5000 | "    |                         |                 |                      |    | 10                                                                |
| 11 |      | C. H. James    | 45          | M   |       |        |      | "    |                         |                 |                      |    | 11                                                                |
| 12 |      | J. M. H. James | 27          | M   |       | Farmer |      | "    |                         |                 |                      |    | 12                                                                |
| 13 |      | M. C. James    | 24          | M   |       |        |      | "    |                         |                 |                      |    | 13                                                                |
| 14 |      | M. C. James    | 22          | M   |       |        |      | "    |                         |                 |                      |    | 14                                                                |
| 15 |      | C. H. James    | 20          | M   |       |        |      | "    |                         |                 |                      |    | 15                                                                |
| 16 |      | C. H. James    | 17          | M   |       |        |      | "    |                         |                 |                      |    | 16                                                                |
| 17 |      | J. M. H. James | 16          | M   |       | Farmer |      | "    |                         | 1               |                      |    | 17                                                                |
| 18 |      | C. H. James    | 13          | M   |       |        |      | "    |                         |                 |                      |    | 18                                                                |
| 19 |      | J. M. H. James | 12          | M   |       |        |      | "    |                         |                 |                      |    | 19                                                                |
| 20 | 1238 | J. H. James    | 27          | M   |       |        | 4500 | Geo. |                         |                 |                      |    | 20                                                                |
| 21 |      | J. H. James    | 25          | M   |       |        |      | Geo. |                         |                 |                      |    | 21                                                                |
| 22 |      | J. H. James    | 21          | M   |       |        |      | "    |                         |                 |                      |    | 22                                                                |
| 23 |      | J. H. James    | 19          | M   |       |        |      | "    |                         |                 |                      |    | 23                                                                |
| 24 |      | M. James       | 17          | M   |       |        |      | "    |                         |                 |                      |    | 24                                                                |
| 25 |      | J. H. James    | 15          | M   |       |        |      | "    |                         | 1               |                      |    | 25                                                                |
| 26 |      | C. H. James    | 12          | M   |       |        |      | "    |                         | 1               |                      |    | 26                                                                |
| 27 |      | J. H. James    | 10          | M   |       |        |      | "    |                         | 1               |                      |    | 27                                                                |
| 28 |      | J. H. James    | 8           | M   |       |        |      | "    |                         | 1               |                      |    | 28                                                                |
| 29 |      | J. H. James    | 6           | M   |       |        |      | "    |                         | 1               |                      |    | 29                                                                |
| 30 |      | C. H. James    | 5           | M   |       |        |      | "    |                         |                 |                      |    | 30                                                                |
| 31 |      | M. James       | 3           | M   |       |        |      | "    |                         |                 |                      |    | 31                                                                |
| 32 |      | J. H. James    | 2 1/2       | M   |       |        |      | "    |                         |                 |                      |    | 32                                                                |
| 33 | 1239 | J. South       | 52          | M   |       |        | 3000 | Geo. |                         |                 |                      |    | 33                                                                |
| 34 |      | J. South       | 42          | M   |       |        |      | Geo. |                         |                 | 1                    |    | 34                                                                |
| 35 |      | J. V. M. South | 17          | M   |       |        |      | Geo. |                         |                 |                      |    | 35                                                                |
| 36 |      | J. M. South    | 14          | M   |       |        |      | Geo. |                         |                 |                      |    | 36                                                                |
| 37 |      | C. S. South    | 7           | M   |       |        |      | "    |                         |                 |                      |    | 37                                                                |
| 38 |      | M. S. South    | 5           | M   |       |        |      | "    |                         |                 |                      |    | 38                                                                |
| 39 |      | J. C. South    | 27          | M   |       |        |      | Geo. |                         |                 |                      |    | 39                                                                |
| 40 | 1240 | J. S. South    | 33          | M   |       | Farmer |      | Geo. |                         |                 |                      |    | 40                                                                |
| 41 |      | M. Sanders     | 27          | M   |       |        |      | "    |                         |                 |                      |    | 41                                                                |
| 42 |      | J. H. Sanders  | 12          | M   |       |        |      | Geo. |                         | 1               |                      |    | 42                                                                |
|    |      |                | 2 1/2       |     |       |        |      |      |                         |                 |                      |    |                                                                   |
|    |      |                | 20          |     |       |        |      |      |                         |                 |                      |    |                                                                   |

Record Index

Source Information



**Name:** J South  
**Age:** 54  
**Estimated Birth Year:** abt 1796  
**Birth Place:** South Carolina  
**Gender:** Male  
**Home in 1850 (City,County,State):** District 42, Henry, Georgia  
**Family Number:** 1239

**Record URL:** <http://search.ancestry.com/cgi-bin/sse.dll?h=18737015&db=1850usfedcenancestry&indiv=try>

**Source Citation:** Year: 1850; Census Place: District 42, Henry, Georgia; Roll: M432\_73; Page: 273A; Image: 446.

**Source Information:**



Ancestry.com. 1850 United States Federal Census [database online]. Provo, UT, USA: Ancestry.com Operations, Inc., 2009. Images reproduced by

FamilySearch.  
 Original data: Seventh Census of the United States, 1850; (National Archives Microfilm Publication M432, 1009 rolls); Records of the Bureau of the Census, Record Group 29; National Archives, Washington, D.C.

ancestry

SCHEDULE 1.—Free Inhabitants in \_\_\_\_\_ in the County of **Henry** State of **Georgia** enumerated by me, on the **13<sup>th</sup>** day of **June** 1860. **Robt. Elliott** Ass't Marshal  
 Post Office **White House**

| Dwelling house, numbered in the order of visitation. | Family numbered in the order of visitation. | The name of every person whose usual place of abode on the first day of June, 1860, was in this family. | Description. |      |        | Profession, Occupation, or Trade of each person, male and female, over 15 years of age. | Value of Estate Owned. |                           | Place of Birth, Naming the State, Territory, or Country. | Married within the year. | Attended School within the year. | Whether deaf and dumb, blind, insane, idiotic, pauper, or convict. |
|------------------------------------------------------|---------------------------------------------|---------------------------------------------------------------------------------------------------------|--------------|------|--------|-----------------------------------------------------------------------------------------|------------------------|---------------------------|----------------------------------------------------------|--------------------------|----------------------------------|--------------------------------------------------------------------|
|                                                      |                                             |                                                                                                         | Age.         | Sex. | Color. |                                                                                         | Value of Real Estate.  | Value of Personal Estate. |                                                          |                          |                                  |                                                                    |
| 1                                                    | 2                                           | 3                                                                                                       | 4            | 5    | 6      | 7                                                                                       | 8                      | 9                         | 10                                                       | 11                       | 12                               | 13                                                                 |
|                                                      |                                             | Marianne                                                                                                | 14           | F    |        |                                                                                         |                        |                           | Georgia                                                  |                          |                                  |                                                                    |
|                                                      |                                             | Elsie L                                                                                                 | 10           |      |        |                                                                                         |                        |                           | "                                                        |                          |                                  |                                                                    |
|                                                      |                                             | William J                                                                                               | 16           | M    |        | Farmer                                                                                  |                        |                           | "                                                        | 1                        |                                  |                                                                    |
|                                                      |                                             | James H                                                                                                 | 12           |      |        |                                                                                         |                        |                           | "                                                        | 1                        |                                  |                                                                    |
|                                                      |                                             | Daniel W                                                                                                | 9            |      |        |                                                                                         |                        |                           | "                                                        |                          |                                  |                                                                    |
| 88                                                   |                                             | Vacant                                                                                                  |              |      |        |                                                                                         |                        |                           |                                                          |                          |                                  |                                                                    |
| 89                                                   | 89                                          | John A Arnold                                                                                           | 39           | M    |        | Farmer                                                                                  | 400                    | 300                       | S Carolina                                               |                          |                                  |                                                                    |
|                                                      |                                             | Margaret                                                                                                | 19           | F    |        |                                                                                         |                        |                           | Georgia                                                  |                          |                                  |                                                                    |
|                                                      |                                             | Thomas                                                                                                  | 1            | M    |        |                                                                                         |                        |                           | "                                                        |                          |                                  |                                                                    |
| 90                                                   | 90                                          | Edmond Blackman                                                                                         | 72           | M    |        | Farmer                                                                                  |                        | 124                       | N Carolina                                               |                          |                                  |                                                                    |
|                                                      |                                             | Merrigg                                                                                                 | 70           | F    |        |                                                                                         |                        |                           | "                                                        |                          |                                  |                                                                    |
|                                                      |                                             | Vacant                                                                                                  |              |      |        |                                                                                         |                        |                           |                                                          |                          |                                  |                                                                    |
| 92                                                   | 92                                          | John South                                                                                              | 64           | M    |        | Farmer                                                                                  | 5925                   | 15025                     | S Carolina                                               |                          |                                  |                                                                    |
|                                                      |                                             | John H                                                                                                  | 27           |      |        | Teacher Post School                                                                     |                        |                           | Georgia                                                  |                          |                                  |                                                                    |
|                                                      |                                             | Robertus                                                                                                | 14           |      |        |                                                                                         |                        |                           | "                                                        | 1                        |                                  |                                                                    |
|                                                      |                                             | Sarah A                                                                                                 | 17           | F    |        |                                                                                         |                        |                           | "                                                        |                          |                                  |                                                                    |
|                                                      |                                             | Francis B                                                                                               | 9            |      |        |                                                                                         |                        |                           | "                                                        | 1                        |                                  |                                                                    |
|                                                      |                                             | William J Maddox                                                                                        | 18           | M    |        | Student                                                                                 |                        |                           | "                                                        | 1                        |                                  |                                                                    |
| 93                                                   | 93                                          | Charles J Skelton                                                                                       | 32           | M    |        | Farmer                                                                                  | 600                    | 300                       | Isa                                                      |                          |                                  |                                                                    |
|                                                      |                                             | Margaret                                                                                                | 34           | F    |        |                                                                                         |                        |                           | S Carolina                                               |                          |                                  |                                                                    |
|                                                      |                                             | Mary A                                                                                                  | 9            |      |        |                                                                                         |                        |                           | Georgia                                                  | 1                        |                                  |                                                                    |
|                                                      |                                             | William W                                                                                               | 5            | M    |        |                                                                                         |                        |                           | "                                                        |                          |                                  |                                                                    |
| 94                                                   | 94                                          | John Blackmon                                                                                           | 37           | M    |        | Farmer                                                                                  | 750                    | 300                       | N Carolina                                               |                          |                                  |                                                                    |
|                                                      |                                             | Elyzabeth C                                                                                             | 29           | F    |        |                                                                                         |                        |                           | "                                                        |                          |                                  |                                                                    |
|                                                      |                                             | Pateron M                                                                                               | 7            | M    |        |                                                                                         |                        |                           | Georgia                                                  |                          |                                  |                                                                    |
|                                                      |                                             | John                                                                                                    | 1            |      |        |                                                                                         |                        |                           | "                                                        |                          |                                  |                                                                    |
|                                                      |                                             | Martha                                                                                                  | 5            | F    |        |                                                                                         |                        |                           | "                                                        |                          |                                  |                                                                    |
| 95                                                   | 95                                          | John H Morris                                                                                           | 35           | M    |        | Dist. Saddler                                                                           |                        | 660                       | "                                                        |                          |                                  |                                                                    |
|                                                      |                                             | Larria                                                                                                  | 31           | F    |        |                                                                                         |                        |                           | S Carolina                                               |                          |                                  |                                                                    |
|                                                      |                                             | Ananda M                                                                                                | 14           |      |        |                                                                                         |                        |                           | Georgia                                                  | 1                        |                                  |                                                                    |
|                                                      |                                             | Napoleon B                                                                                              | 12           | M    |        |                                                                                         |                        |                           | "                                                        | 1                        |                                  |                                                                    |
|                                                      |                                             | Benjamin D                                                                                              | 10           |      |        |                                                                                         |                        |                           | "                                                        | 1                        |                                  |                                                                    |
|                                                      |                                             | William W                                                                                               | 9            |      |        |                                                                                         |                        |                           | "                                                        | 1                        |                                  |                                                                    |
|                                                      |                                             | John F                                                                                                  | 4            |      |        |                                                                                         |                        |                           | "                                                        |                          |                                  |                                                                    |
|                                                      |                                             | James N                                                                                                 | 1            |      |        |                                                                                         |                        |                           | "                                                        |                          |                                  |                                                                    |
|                                                      |                                             | Nancy A                                                                                                 | 6            | F    |        |                                                                                         |                        |                           | "                                                        |                          |                                  |                                                                    |
| 96                                                   | 96                                          | R. M. Morris                                                                                            | 24           | M    |        | Trucker Co. Sash                                                                        | 1000                   | 1000                      | "                                                        |                          |                                  |                                                                    |
|                                                      |                                             | Mary E                                                                                                  | 21           | F    |        |                                                                                         |                        |                           | Alabama                                                  |                          |                                  |                                                                    |
|                                                      |                                             | Leah V                                                                                                  | 1            |      |        |                                                                                         |                        |                           | Georgia                                                  |                          |                                  |                                                                    |
|                                                      |                                             | M. E. Potts                                                                                             | 21           | M    |        | Student                                                                                 |                        |                           | "                                                        | 1                        |                                  |                                                                    |

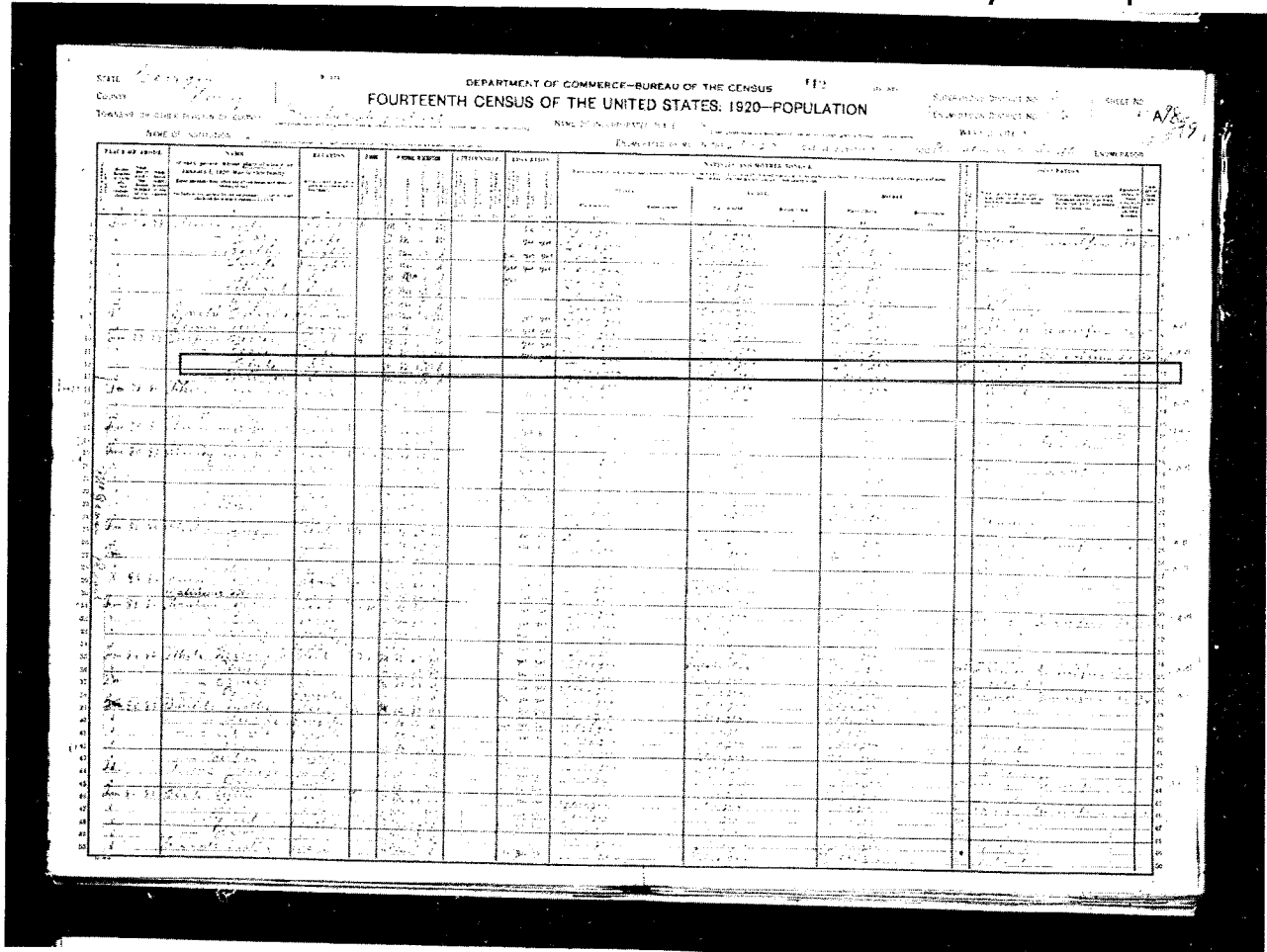
No. white males, **23** No. colored males, \_\_\_\_\_ No. foreign born, \_\_\_\_\_ No. blind, \_\_\_\_\_  
 No. white females, **18** No. colored females, \_\_\_\_\_ No. deaf and dumb, \_\_\_\_\_ No. insane, \_\_\_\_\_  
 No. idiots, \_\_\_\_\_ No. pauper, \_\_\_\_\_ No. convicts, \_\_\_\_\_

866-17709





# 1920 United States Federal Census record for Clyde Turpin



## Record Index

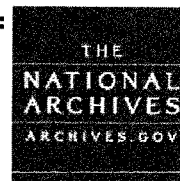
**Name:** Clyde Turpin  
**Home in 1920:** Brushy Knob, Henry, Georgia  
**Age:** 3  
**Estimated Birth Year:** abt 1917  
**Birthplace:** Georgia  
**Relation to Head of House:** Son  
**Father's name:** Mercer Turpin  
**Father's Birth Place:** Georgia  
**Mother's name:** Essie Turpin  
**Mother's Birth Place:** Georgia  
**Marital Status:** Single  
**Race:** White  
**Sex:** Male

## Source Information

**Record URL:** <http://search.ancestry.com/cgi-bin/sse.dll?h=14684309&db=1920usfedcen&indiv=true>

**Source Citation:** Year: 1920; Census Place: Brushy Knob, Henry, Georgia; Roll: T625\_263; Page: 5A; Enumeration District: 96; Image: 232.

## Source Information:



Ancestry.com. 1920 United States Federal Census [database online]. Provo, UT, USA: Ancestry.com Operations Inc, 2010. Images reproduced by FamilySearch.

Original data: Fourteenth Census of the United States, 1920. (NARA microfilm publication T625, 2076 rolls). Records of the Bureau of the Census, Record Group 29. National Archives, Washington, D.C. For details on the contents of the film numbers, visit the following NARA web page: NARA. Note: Enumeration Districts 819-839 are on roll 323 (Chicago City).







WILL BOOK B, 1872-1894

Probated 26 January 1891. William N. Nelson, Ordinary.

Page 218 Henry County. Last Will and Testament of John South, signed 29 April 1890. To wife Elizabeth South, Lot #190, 5 acres, cow and calf and 56 acres in Land Lot #163, and all my property during her lifetime. At her death to be sold and proceeds divided between the children of my son, F. C. South, deceased, to have one share; my son H. W. Marion Smith, Newton M. South; and my daughter Frances B. A. Carroll. To children of deceased daughter, Cynthia S. A. Patillo Namely: Minnie Henderson, Lillah Patillo and Orris Patillo \$10 each and remainder to grandson Samuel Patillo (son W. R. South deceased). Witness M. D. Ford, J. N. Thurman, A. P. Adamson. Probated 2 March 1891. William N. Nelson, Ordinary.

Page 220 Henry County. Last Will and Testament of Hiram C. Elliott, signed 12 August 1886. To my daughter, Catherine Hightower, wife of Raleigh Hightower, 101½ acres of land. To my two sons, Henry S. Elliott and J. F. Elliott, 202½ acres in Land Lot #37, Dist. 2. To daughter Nancy J. Crumbly, wife of George Crumbly the west half of Land Lot #36, Dist. 7, 101½ acres. Residue equally divided between my four children. Apoint my two sons Executors. Witness J. H. Everett.



I, John South, of said  
 County, Georgia, being of  
 advanced age, but of sound and  
 disposing mind and memory and knowing that I  
 must shortly depart this life deem it right and proper  
 both as regards myself and family to make such dis-  
 position of the property with which a kind Providence  
 has blessed me with as I deem best to make this  
 my last Will and Testament revoking all others.  
 I desire that at my death my body shall  
 be buried in a decent and Christian like manner,  
 my soul I commit to the God who gave it.

Item 1<sup>st</sup> I give and bequeath to my beloved wife  
 Elizabeth South the following land of Lot No. (180)  
 one hundred and ninety, being five acres of land  
 between the lowerbow road on the south side and  
 the Atlanta road on the north part and the land  
 of J. K. South on the west, being all the land I now  
 own between said roads. Also I give and bequeath  
 to my said wife a cow and calf to be selected by her  
 and also provisions sufficient for a twelve month's  
 support. These bequests to my wife to be for her natural  
 life or widowhood and at her death in case she should  
 survive me or in the event of her marriage the same  
 shall revert back to my Estate and to my heirs and  
 divided in the same proportion between them as  
 my other property herein after provided.

Item 2<sup>nd</sup> I desire that at my death all the remain-  
 ing property consisting of Lot of land No. (170) twelfth  
 District of Henry County (except the five acres described  
 in the foregoing Item) and fifty-six acres on the  
 north side of Lot No. 163, twelfth District of Henry  
 County, and all the stock and personal property not  
 otherwise disposed of shall be sold by my Executor  
 hereinafter named and the proceeds divided between  
 my heirs as follows: The children of my son G. C.  
 South deceased to have one part my son John N. H.  
 South and my son Newton M. South, and  
 my daughter Francis B. A. Carroll to have each an  
 equal part. To the children of my daughter Cynthia  
 A. Piller deceased I give as follows: to Minnie Ben-  
 nison, Lillian Piller and Coris Piller, two dollars each



and the remainder of an equal part I give to my  
grandson Samuel Patillo, son of Cynthia S. A.  
Patillo deceased, provided that my son N. H. South  
shall incur no damages in any suit brought against  
him by the heirs of Cynthia S. A. Patillo as Executor  
of the estate of my son W. R. South deceased, if  
such damages shall be incurred by him, then the said  
remainder to be divided equally between Newton H.  
South and Samuel Patillo.

Item 4<sup>th</sup> I desire that my Executors shall collect  
all debts due me at my death and pay any debts  
I may then owe, and the money arising therefrom  
shall be divided with that derived from the sale of  
my property mentioned in the preceding item.

Item 5<sup>th</sup> I hereby constitute and appoint my  
son Newton H. South and my son-in-law S. H.  
Carroll as Executors of this my last Will and  
Testament.

This the 29<sup>th</sup> day of April 1870.  
John South

Signed, declared and published by John South  
as his last Will and Testament, in the presence  
of us the subscribers who subscribe our names here  
in the presence of said testator (and at his instance  
and request) and of each other, he signing in our  
presence and we signing in his presence.

H. D. Ford  
G. W. Thurman  
A. P. Adamson

Georgia, Wilcox County.

The foregoing will of John  
South proven in solemn form of Law by the  
oaths of H. D. Ford, G. W. Thurman and A. P.  
Adamson, the subscribing witnesses to said will, order  
ed that the same be admitted to record, as  
satisfactorily proven in solemn form.

This March 2<sup>nd</sup> 1871. J. M. Peterson  
17 February



State of Georgia Shung County  
 Last will and testament of Morris C. White  
 I Morris C. White of said state and  
 County being of sound mind & disposing  
 mind and memory do make this my  
 last will and testament, hereby revoking  
 all wills heretofore made by me  
 Item #1 I wish my Executor as soon as  
 possible after my death to pay my debts  
 if a sale of property shall be necessary  
 I wish him to select for sale that which  
 can be most advantageously used for the  
 purpose and I authorize him to sell the same  
 either at public or private sale as he may  
 see fit I wish for my real estate to remain  
 as it is now and to remain so until Sarah  
 Morris becomes the age of twenty one (21) years of  
 age and all of my personal property be left  
 discretionary with the majority of my heirs  
 if the majority on all of these see fit to  
 sell of any of the perishable property which  
 that which will be most beneficial to the family  
 I want my Sons Cole and Sarah to be given  
 an education to the equal with that of  
 Flourney & Murtle before a division is made  
 I want I want my Sons Cole & Sarah to be given  
 One thousand dollars each to be paid them as  
 they become twenty one years of age to make  
 it equal with Flourney and Murtle then  
 after this is done I want all of my  
 property to be equally divided between  
 my wife Emma and my heirs, or my Emma  
 see fit she can take a dowery and the  
 remainder to be divided between my heirs  
 I do hereby appoint Flourney Executor of this my  
 last will and if Flourney was not to be there  
 I appoint my Sons in lieu thereof I also give my  
 Executors the power to make good deeds to all the  
 property sold

In testimony whereof I have  
 here to set my hand this 7 day

Morris C. White







| GROOM                | BRIDE                  | DATE     |          |
|----------------------|------------------------|----------|----------|
| WARREN, Peter        | VESSELS, Mary          | 02/18/18 |          |
| WARREN, Thomas       | PORTWOOD, Aliph        | 12/27/18 |          |
| WARREN, Thomas       | PORTWOOD, Alipha       | 02/27/18 | WILKINS, |
| WARREN, William      | STRICKLAND, Lyda       | 08/02/18 | WILKINS, |
| WATTS, Thomas        | GARNER, Elizabeth      | 09/16/18 | WILKINSO |
| WATTS, William       | FOGETY, (?) Nancy      | 08/18/18 | WILLIAM, |
| WAUGH, (?) John L.   | COUGE, (?) Hannah S.   | 01/11/18 | WILLIAM, |
| WEATHERLY, Isaac C.  | CRABB, Rachel A.       | 02/14/18 | WILLIAMS |
| WEBB, Ludwell M.     | HAYWOOD, Winney        | 12/05/18 | WILLIAMS |
| WEEMS, John M.       | BERNHARD, Isabella M.  | 01/29/18 | WILLIAMS |
| WEEMS, Samuel        | WHITE, Harriet         | 12/03/18 | WILLIAMS |
| WEEMS, Samuel R.     | KEMBREL, Anne          | 04/23/18 | WILLIAMS |
| WEEMS, Thomas D.     | MCKAY, Caroline S.     | 12/02/18 | WILLIAMS |
| WELCH, Geo. W.       | WOOLF, (?) Julia       | 12/--/18 | WILLIAMS |
| WELCH, Whitfield B.  | DALE, Elizabeth Jane   | 12/22/18 | WILLIAMS |
| WELCH, William       | HUNT, Sarah            | 12/17/18 | WILLIAMS |
| WELDEN, Burwell      | MCCUTCHEN, Elizabeth   | 04/03/18 | WILLIAM  |
| WELDEN, John M.      | JOHNSON, Caroline M.   | 02/01/18 | WILLIAM  |
| WELDERS, Isaac       | HEFLIN, Sarah          | 12/22/18 | WILLIFI  |
| WELLS, George J.     | RADFORD, Mary          | 03/12/18 | WILLING  |
| WELLS, James         | SMITH, Cynthia         | 08/22/18 | WILLSON  |
| WELLS, Samuel Jr.    | CAMP, Rhoda H.         | 11/05/18 | WILSON,  |
| WELLS, Zacheriah     | EDWARDS, Mary          | 01/31/18 | WILSON,  |
| WEST, Geo. J.        | THOMAS, Nancy          | 09/29/18 | WILSON,  |
| WEST, James          | SMITH, Helen           | 02/17/18 | WILSON,  |
| WEST, James King     | STEPHENSON, Burten Ann | 03/06/18 | WINBUSH  |
| WESTBROOK, John      | PYLE, Sarah Ann        | 03/24/18 | WINFREY  |
| WESTER, Axum         | WESTER, Lucinda        | 01/28/18 | WINKLES  |
| WHALEY, Henry T.     | DYE, Amanda F.         | 10/15/18 | WLAKER,  |
| WHALEY, Isaac        | BERRY, Sarah           | 01/07/18 | WOLF, P  |
| WHALEY, William      | SIMS, Emily K.         | 02/11/18 | WOLF, P  |
| WHALY, Isham         | LILE, Elizabeth        | 08/20/18 | WOLLS,   |
| WHITAKER, Joel E. W. | JONES, Martha G.       | 05/23/18 | WOOD, G  |
| WHITAKER, R. J.      | TEAL, Frances          | 11/10/18 | WOOD, J  |
| WHITE, Asa A.        | CRAWFORD, Mary E.      | 11/19/18 | WOOD, J  |
| WHITE, David         | MITCHELL, Kizzy        | 02/15/18 | WOOD, (  |
| WHITE, James         | CAMPBELL, Pamela       | 02/03/18 | WOODEL,  |
| WHITE, John A. W.    | RUSSELL, Rebecca T. H. | 09/10/18 | WOOTEN,  |
| WHITE, John H. C.    | OWEN, Nancy Ann        | 05/24/18 | WOOTON,  |
| WHITE, N. T.         | NEWTON, Mary           | 10/12/18 | WORD,    |
| WHITE, Terrell       | BUBB, Mary             | 12/10/18 | WRIGHT   |
| WHITE, William       | TREADWELLEN, Rachel    | 04/26/18 | WRIGHT   |
| WHITEKER, Burton     | WILLET, Mary           | 01/04/18 | WRIGHT   |
| WHITLEY, William     | BRABIN, Mary           | 08/17/18 | WYATT,   |
| WIGGERS, Henry C.    | MCCANTS, (?) Elizabeth | 07/26/18 | WYATT,   |
| WIGHT, John          | DEAL, Therza           | 05/21/18 | WYATT,   |
| WILDER, Charles      | COOK, Sarah            | 03/11/18 | WYATT,   |
| WILDER, Larkin       | BURN, Elizabeth        | 10/04/18 | WYNN,    |
| WILKINS, George W.   | BURN, Susan            | 05/17/18 | YARBOR   |
| WILKINS, Henry       | CRUSE, F               | 02/24/18 | YARBOR   |
| WILKINS, Samuel      |                        |          |          |



WELDEN, Samuel  
 WELDEN, John M.  
 WELDEN, Isaac  
 WELLS, George J.  
 WELLS, James  
 WELLS, Samuel Jr.  
 WELLS, Zacheriah  
 WEST, Geo. J.  
 WEST, James  
 WEST, James King  
 WESTBROOK, John  
 WESTER, Axum  
 WHALEY, Henry T.  
 WHALEY, Isaac  
 WHALEY, William  
 WHALEY, Isham  
 WHITAKER, Joel E. W.  
 WHITAKER, R. J.  
 WHITE, Asa A.  
 WHITE, David  
 WHITE, James  
 WHITE, John A. W.  
 WHITE, John H. C.  
 WHITE, N. T.  
 WHITE, Terrell  
 WHITE, William  
 WHITERKER, Burton  
 WHITLEY, William  
 WIGGERS, Henry C.  
 WIGHT, John  
 WILDER, Charles  
 WILDER, Larkin  
 WILKINS, George W.  
 WILKINS, Henry  
 WILKINS, Samuel

HUNT, Sarah  
 MCCUTCHEN, Elizabeth  
 JOHNSON, Caroline M.  
 HEFLIN, Sarah  
 RADFORD, Mary  
 SMITH, Cynthia  
 CAMP, Rhoda H.  
 EDWARDS, Mary  
 THOMAS, Nancy  
 SMITH, Helen  
 STEPHENSON, Burten Ann  
 PYLE, Sarah Ann  
 WESTER, Lucinda  
 DYE, Amanda F.  
 BERRY, Sarah  
 SIMS, Emily K.  
 LILE, Elizabeth  
 JONES, Martha G.  
 TEAL, Frances  
 CRAWFORD, Mary E.  
 MITCHELL, Kizzy  
 CAMPBELL, Pamela  
 RUSSELL, Rebecca T. H.  
 OWEN, Nancy Ann  
 NEWTON, Mary  
 BUBB, Mary  
 TREADWELLEN, Rachel  
 WILLET, Mary  
 BRABIN, Mary  
 MCCANTS, (?) Elizabeth  
 DEAL, Therza  
 COOK, Sarah  
 BURN, Elizabeth  
 BURN, Susan  
 CRUSE, Parmelia A.  
 SHOUD, Nancy H.

12/17/1845  
 04/03/1831  
 02/01/1849  
 12/22/1835  
 03/12/1828  
 08/22/1838  
 11/05/1840  
 01/31/1828  
 09/29/1835  
 02/17/1850  
 03/06/1839  
 03/24/1828  
 01/28/1827  
 10/15/1840  
 01/07/1840  
 02/11/1844  
 08/20/1835  
 05/23/1844  
 11/10/1835  
 11/19/1838  
 02/15/1829  
 02/03/1831  
 09/10/1846  
 05/24/1842  
 10/12/1841  
 12/10/1834  
 04/26/1825  
 01/04/1827  
 08/17/1837  
 07/26/1832  
 05/21/1833  
 03/11/1845  
 10/04/1845  
 05/17/1845  
 12/24/1845



DONATED BY THE

HENRY COUNTY  
GENEALOGICAL SOCIETY

Henry County  
Georgia

Marriage Records  
1851 - 1900

ISBN 0-9628557-0-7



|                       |                     |            |
|-----------------------|---------------------|------------|
| West, J. H.           | Calloway, Kendall   | 17/28/1868 |
| West, C. A.           | Mitchell, Emma      | 10/3/1895  |
| Westbrook, John A.    | Colvin, Maggie      | 8/28/1897  |
| Westmoreland, Mark W. | Whitsell, Louisa    | 5/8/1891   |
| Westmoreland, C. G.   | Fields, Betty       | 3/11/1851  |
| Wharten, Dillen       | Stanfield, Araminta | 12/12/1894 |
| Wheeler, David B.     | Wilkins, Ophelia    | 1/8/1857   |
| White, James          | Young, Margaret     | 12/10/1893 |
| White, Robert         | Avery, Mary         | 12/14/1851 |
| White, C. C.          | Sharp, Abrilla      | 12/16/1852 |
| White, Thomas         | Young, Mary Ann     | 12/28/1852 |
| White, Robert         | Ross, Margaret      | 3/15/1853  |
| White, Americus       | Parham, Nancy       | 9/11/1860  |
| White, James          | Chappel, Frances    | 11/28/1868 |
| White, Mericus        | Ross, Mattie        | 11/10/1872 |
| White, M. C.          | Thurman, M. E.      | 12/14/1873 |
| White, Anderson       | Conkle, Rebecca     | 1/20/1876  |
| White, M. C.          | Sims, C. E.         | 12/20/1877 |
| White, Henry          | McKinney, Mary      | 2/8/1881   |
| White, W. J.          | Vornorn, G. A.      | 5/29/1886  |
| White, M. C.          | Ford, S. A. V.      | 7/22/1886  |
| White, P. W.          | Bostwick, Lula      | 12/28/1893 |
| White, T. G.          | Sims, M. L.         | 9/3/1894   |
| Whitehead, L. D.      | Evans, G. A.        | 12/13/1896 |
| Whitfield, Joseph     | Smith, Amanda       | 9/11/1878  |
| Whitley, William      | Dobbs, Sarah        | 4/26/1883  |
| Whittaker, H. V.      | McCoy, Mary         | 12/3/1876  |
|                       |                     | 4/24/1865  |
|                       |                     | 10/5/1865  |



# HENRY COUNTY, GEORGIA MARRIAGE RECORDS

| MALE               | FEMALE             | DATE       |
|--------------------|--------------------|------------|
| Sorrow, William T. | Phillips, Nancy A. | 12/24/1885 |
| Sorrow, S. F.      | Blackman, L. C.    | 6/20/1886  |
| Sorrow, J. H.      | Toney, Lizzie      | 1/27/1889  |
| Souder, William    | Kelley, Dora       | 10/16/1892 |
| South, Newton      | White, Nancy J.    | 12/28/1858 |
| South, F. C.       | Sprayberry, A. C.  | 1/12/1860  |
| South, John        | Parkerson, Matilda | 11/6/1864  |
| South, Bing        | Gleaton, Lizzie    | 12/23/1875 |
| South, John        | Moore, Elizabeth   | 5/29/1884  |
| South, Thomas      | Stewart, Catharine | 10/9/1882  |
| South, Frances     | Hanes, Ida         | 12/18/1887 |
| South, J. W.       | Bailey, M. L.      | 12/27/1888 |
| South, C. W.       | Harris, F. M.      | 12/5/1897  |
| Sowell, E. M.      | Lester, Nancy M.   | 2/18/1853  |
| Sowell, William R. | Daniel, Matilda    | 11/15/1855 |
| Sowell, Martin     | Whittaker, Mary J. | 12/16/1858 |
| Sowell, James W.   | Sowell, Matilda    | 6/23/1863  |
| Sowell, Ezekiel    | Christian, Louisa  | 1/9/1873   |
| Sowell, W. R.      | Setzer, Annie      | 11/19/1881 |
| Sowell, J. B.      | Hammond, U. C.     | 2/17/1890  |
| Sowell, James A.   | Morrow, Sallie     | 12/25/1890 |
| Sowell, Fletcher   | Goodwin, Annie     | 12/9/1891  |
| Sowell, Alonzo     | Culpepper, Nettie  | 1/21/1891  |
|                    | (Effie)            | 12/17/1887 |

## U.S. School Yearbooks Index record for Ronald Turpin



### dairy science club

An organization to acquaint students with the dairy industry.

President, James Yule  
 Vice president, Horace Crider  
 Secretary, James Larkin  
 Treasurer, Richard Crane

- |                   |                         |
|-------------------|-------------------------|
| Marshall Babb     | Fay Johnston            |
| James Baird       | James Keith             |
| Dennis Baswell    | Harris Lancaster        |
| Richard Beaumont  | George Lapa             |
| Lawrence Bell     | Jeffery Laufer          |
| Paul Blackwood    | Loretta Kwei-Ping Liang |
| Cleve Bridges     | John Martin             |
| Donald Bristol    | Willis McGee            |
| Michael Bucheit   | Raymond Niles           |
| James Carter      | Donald Nunn             |
| Peter Centner     | Ethyl Orpin             |
| Joseph Cerra      | Findlay Pate            |
| Augustine Chuang  | Paul Penechansky        |
| Ted Clark         | Suzanne Poppell         |
| Thomas Connolly   | William Ransom          |
| Thomas Copelan    | Reginald Rodaro         |
| Frank Coy         | Miguel-Angel Ruiz       |
| Hyman Cutler      | Henry Russell           |
| Houshang Dayan    | Phillip Sanfilippo      |
| Richard Dean      | Geoffrey Sans           |
| William Dell      | Robert Scolaro          |
| Vincent DeMasi    | Robert Sherrer          |
| Marilyn Dement    | Richard Shwedo          |
| Rosario Donatucci | Charles Slade           |
| Larry Dunagan     | John Smith              |
| Edward Fisher     | Ed Spell                |
| Edward Fuhr       | Timothy Stalker         |
| Joseph Giroux     | Paul Swenson            |
| Arthur Graham     | Clarence Trammell       |
| William Gravett   | Thomas Trebilcock       |
| Darrell Gregory   | Ronald Turpin           |
| Ghanem Haddad     | George Wadde            |
| Forrest Hampston  | Allen Wagner            |
| Ronald Holl       | Ben Wall                |
| Horace Houser     | David West              |
| Brian Hunter      | Dennis Whitehead        |

194



Daniel Amdt  
 Paul Amdt  
 John Amodeo  
 Ernest Andrews  
 Ronald Barker  
 Ted Beck  
 Henry Bell  
 Robert Bondy  
 David Carson  
 Rogers Corral  
 Lamar Crosby  
 James Dore  
 Robert Dwyer



Frederic Bostman  
 Blake Boyer  
 John Calvey  
 Lucy Clark  
 Bob Coleman  
 Ed Connel  
 John Herndon  
 Jack Herrington  
 Owen Heston  
 Dwight Hobbs  
 Jerry Hoggins  
 Joe Jackson  
 Richard Johnson  
 Elmer Lester  
 Charles Lacey

Record Index

Source Information

Name: Ronald Turpin

Record URL: <http://search.ancestry.com/cgi-bin/sse.dll?h=8550935&db=YearbooksIndex&indiv=try>



**Estimated Birth Year:** abt 1948

**Age:** 20

**School:** University of Georgia

**School Location:** Athens, Georgia

**Year:** 1968

**Yearbook Title:** Pandora Yearbook

**Source Information:** Ancestry.com. *U.S. School Yearbooks Index* [database on-line]. Provo, UT, USA: Ancestry.com Operations, Inc., 2010.  
Original data: Various school yearbooks from across the United States.

ancestry